

User Manual

AMAX-5580 AMAX-5400 Series PCIe Modules

**Modular Control Platform
with PCIe and EtherCAT Slice I/O
Expansion**

Copyright

The documentation and the software included with this product are copyrighted 2023 by Advantech Co., Ltd. All rights are reserved. Advantech Co., Ltd. reserves the right to make improvements in the products described in this manual at any time without notice. No part of this manual may be reproduced, copied, translated or transmitted in any form or by any means without the prior written permission of Advantech Co., Ltd. Information provided in this manual is intended to be accurate and reliable. However, Advantech Co., Ltd. assumes no responsibility for its use, nor for any infringements of the rights of third parties, which may result from its use.

Acknowledgments

IBM, PC/AT, PS/2 and VGA are trademarks of International Business Machines Corporation.

Intel®, Core™ and Atom™ are the trademarks of Intel Corporation

Microsoft Windows and MS-DOS are registered trademarks of Microsoft Corp.

All other product names or trademarks are properties of their respective owners.

Support

For more information on this and other Advantech products, please visit our website at: <http://www.advantech.com>

For technical support and service, please visit our support website at: <http://support.advantech.com/>

Product Warranty (2 years)

Advantech warrants to you, the original purchaser, that each of its products will be free from defects in materials and workmanship for two years from the date of purchase.

This warranty does not apply to any products which have been repaired or altered by persons other than repair personnel authorized by Advantech, or which have been subject to misuse, abuse, accident or improper installation. Advantech assumes no liability under the terms of this warranty as a consequence of such events.

Because of Advantech's high quality-control standards and rigorous testing, most of our customers never need to use our repair service. If an Advantech product is defective, it will be repaired or replaced at no charge during the warranty period. For out-of-warranty repairs, you will be billed according to the cost of replacement materials, service time and freight. Please consult your dealer for more details.

If you think you have a defective product, follow these steps:

1. Collect all the information about the problem encountered. (For example, CPU speed, Advantech products used, other hardware and software used, etc.) Note anything abnormal and list any onscreen messages you get when the problem occurs.
2. Call your dealer and describe the problem. Please have your manual, product, and any helpful information readily available.
3. If your product is diagnosed as defective, obtain an RMA (return merchandise authorization) number from your dealer. This allows us to process your return more quickly.
4. Carefully pack the defective product, a fully-completed Repair and Replacement Order Card and a photocopy proof of purchase date (such as your sales receipt) in a shippable container. A product returned without proof of the purchase date is not eligible for warranty service.
5. Write the RMA number visibly on the outside of the package and ship it prepaid to your dealer.

Declaration of Conformity

CE

This product has passed the CE test for environmental specifications when shielded cables are used for external wiring. We recommend the use of shielded cables. This kind of cable is available from Advantech. Please contact your local supplier for ordering information.

FCC Class A

Note: This equipment has been tested and found to comply with the limits for a Class A digital device, pursuant to part 15 of the FCC Rules. These limits are designed to provide reasonable protection against harmful interference when the equipment is operated in a commercial environment. This equipment generates, uses, and can radiate radio frequency energy and, if not installed and used in accordance with the instruction manual, may cause harmful interference to radio communications. Operation of this equipment in a residential area is likely to cause harmful interference in which case the user will be required to correct the interference at his own expense.

Technical Support and Assistance

1. Visit the Advantech web site at www.advantech.com/support where you can find the latest information about the product.
2. Contact your distributor, sales representative, or Advantech's customer service center for technical support if you need additional assistance. Please have the following information ready before you call:
 - Product name and serial number
 - Description of your peripheral attachments
 - Description of your software (operating system, version, application software, etc.)
 - A complete description of the problem
 - The exact wording of any error messages

Safety Precaution - Static Electricity

Follow these simple precautions to protect yourself from harm and the products from damage.

- To avoid electrical shock, always disconnect the power from your PC chassis before you work on it. Don't touch any components on the CPU card or other cards while the PC is on.
- Disconnect power before making any configuration changes. The sudden rush of power as you connect a jumper or install a card may damage sensitive electronic components.

Safety Instructions

1. Read these safety instructions carefully.
2. Keep this User Manual for later reference.
3. Disconnect this equipment from any AC outlet before cleaning. Use a damp cloth. Do not use liquid or spray detergents for cleaning.
4. For plug-in equipment, the power outlet socket must be located near the equipment and must be easily accessible.
5. Keep this equipment away from humidity.
6. Put this equipment on a reliable surface during installation. Dropping it or letting it fall may cause damage.
7. The openings on the enclosure are for air convection. Protect the equipment from overheating. **DO NOT COVER THE OPENINGS.**
8. Make sure the voltage of the power source is correct before connecting the equipment to the power outlet.
9. Position the power cord so that people cannot step on it. Do not place anything over the power cord.
10. All cautions and warnings on the equipment should be noted.
11. If the equipment is not used for a long time, disconnect it from the power source to avoid damage by transient overvoltage.
12. Never pour any liquid into an opening. This may cause fire or electrical shock.
13. Never open the equipment. For safety reasons, the equipment should be opened only by qualified service personnel.
14. If one of the following situations arises, get the equipment checked by service personnel:
 - The power cord or plug is damaged.
 - Liquid has penetrated into the equipment.
 - The equipment has been exposed to moisture.
 - The equipment does not work well, or you cannot get it to work according to the user's manual.
 - The equipment has been dropped and damaged.
 - The equipment has obvious signs of breakage.
15. **DO NOT LEAVE THIS EQUIPMENT IN AN ENVIRONMENT WHERE THE STORAGE TEMPERATURE MAY GO BELOW -10° C (14° F) OR ABOVE 60° C (140° F). THIS COULD DAMAGE THE EQUIPMENT. THE EQUIPMENT SHOULD BE IN A CONTROLLED ENVIRONMENT.**
16. **CAUTION: DANGER OF EXPLOSION IF BATTERY IS INCORRECTLY REPLACED. REPLACE ONLY WITH THE SAME OR EQUIVALENT TYPE RECOMMENDED BY THE MANUFACTURER, DISCARD USED BATTERIES ACCORDING TO THE MANUFACTURER'S INSTRUCTIONS.**
17. **ATTENTION: Danger d'explosion si la batterie est mal REMPLACÉ. REMPLACER UNIQUEMENT PAR LE MEME TYPE OU EQUIVALENT RECOMMANDÉ PAR LE FABRICANT, jeter les piles usagées SELON LES INSTRUCTIONS DU FABRICANT.**
18. The sound pressure level at the operator's position according to IEC 704-1:1982 is no more than 70 dB (A).

DISCLAIMER: This set of instructions is given according to IEC 704-1. Advantech disclaims all responsibility for the accuracy of any statements contained herein.

Contents

Chapter 1	Introduction.....	1
1.1	Introduction	2
1.2	Safety Precautions	2
1.3	Accessories.....	3
1.4	Product Specifications.....	3
1.4.1	AMAX-5580 System Specifications	3
Chapter 2	AMAX-5000 System Overview	5
2.1	System Overview	6
	Figure 2.1 MAX-5000 product Family Overview	6
	Figure 2.2 Power System of AMAX-5000	7
2.2	Configuration of CPU Module, AMAX-5580	8
	Figure 2.3 Front View of AMAX-5580	8
	Table 2.1: Legend of Configuration for the AMAX-5580 CPU Module.....	8
	Figure 2.4 Internal configuration under the front cover of AMAX-5580.....	9
	Table 2.2: Legend of Configuration Inside the AMAX-5580 CPU Module.....	9
2.3	Module Overview	10
2.3.1	AMAX-54XX PCIe Expansion Module	10
	Table 2.3: AMAX-5400 Series Extension Modules.....	10
2.3.2	AMAX-50XX EtherCAT I/O Modules.....	10
	Table 2.4: AMAX-5000 Series Extension Modules.....	10
	Figure 2.5 AMAX-5000 System Configuration for Motion + Vision Application	11
	Table 2.5: AMAX-5000 System Configuration for Motion + Vision Application	11
	Figure 2.6 AMAX-5000 System Configuration for Big Data Edge Concentrator.....	12
	Table 2.6: AMAX-5000 System Configuration.....	12
2.4	CPU Types.....	12
	Table 2.7: AMAX-5580 Control IPC Product Offering	13
	Table 2.8: AMAX-5580 CODESYS Ready PAC Product Offering.	13
2.5	CPU Architecture	13
	Figure 2.7 System Architecture of AMAX-5580	13
Chapter 3	Initial Setup	15
3.1	Selecting the Right Power Supply Unit	16
	Table 3.1: Pin Definition of Power Input Terminal	16
	Table 3.2: Calculating System Power.....	16
	Table 3.3: List of Verified Power Supply Units	16
	Table 3.4: LED Power Status	17
3.2	System Configuration and Installation.....	17
	Table 3.5: Battery	18
	Table 3.6: SW5 Function	18
	Table 3.7: Jumper ERR_LOGIC1.....	18
3.3	Mounting	19
3.3.1	Attaching the AMAX-54XX left-hand-side module (option).....	19
3.3.2	Permissible installation positions	19

	Figure 3.1 Mounting position for AMAX-5580.....	19
3.3.3	Attaching on the DIN-rail.....	20
3.3.4	Install the AMAX-50XX right-hand-side modules.....	20
	Figure 3.2 AMAX-5000 installed in a control box	20
3.3.5	Serial Port Isolation Recommendation	20
	Figure 3.3 AMAX-5490 Serial Expansion module installation ex- ample.....	21
	Figure 3.4 ADAM-4520 Isolated RS-232 to RS-422/485 Converter installation example	21
3.4	BIOS Setup	21
3.4.1	How to enter the BIOS?.....	21
3.4.2	BIOS configuration.....	21
	Figure 3.5 BIOS and processor information	22
3.4.3	Hardware Monitor	22
	Figure 3.6 Configuration list under Advanced tab in BIOS	22
	Figure 3.7 The Hardware Sensors Value showed in BIOS	23
	Figure 3.8 The CPU shutdown temperature and overheating tem- perature configuration in BIOS	23
	Figure 3.9 EC watch dog timer configuration in BIOS	24
3.4.4	Serial port configuration.....	24
	Figure 3.10Serial port configuration in BIOS	24
	Figure 3.11Enabling serial port in BIOS	25
	Figure 3.12Configure serial port protocol type in BIOS	25
3.4.5	Save settings and Return to default.....	25
	Figure 3.13Hotkey to Optimized Defaults and Save & Exit Setup in BIOS.....	26

Chapter 4 Advantech Software Tools 27

4.1	Software Tools.....	28
4.2	Verinfo.....	28
4.3	Susi IOT	29
4.4	EAPI.....	30
4.5	AdvWF	30
4.6	Advantech Lmsensor	31
4.7	Advantech Watchdog KMDF Driver	32

Chapter 5 PCIe Expansion Module 33

5.1	AMAX-5424V 4-port USB3.0 Vision Frame Grabber Module	34
	Figure 5.1 AMAX-5424V Module.....	34
5.1.1	AMAX-5424V Specification.....	34
	Table 5.1: AMAX-5424V General:.....	34
	Table 5.2: AMAX-5424V USB Port:.....	34
	Table 5.3: AMAX-5424V Protection:	35
	Table 5.4: AMAX-5424V Environment:	35
5.1.2	LED Indicator	35
	Figure 5.2 AMAX-5424V Module LED Indicator	35
	Table 5.5: AMAX-5424V Module LED Indicator	35
5.2	AMAX-5490 2-port Isolated RS-232/422/485 Communication Module...	36
	Figure 5.3 AMAX-5490 Module	36
5.2.1	AMAX-5490 Specification	36
	Table 5.6: AMAX-5490 General:	36
	Table 5.7: AMAX-5490 Serial Communication:	36
	Table 5.8: AMAX-5490 Protection:	37
	Table 5.9: AMAX-5490 Environment:	37
5.2.2	LED Indicator	37
	Figure 5.4 AMAX-5490 Module LED Indicator	37
	Table 5.10: AMAX-5490 Module LED Indicator	37

5.2.3	COM1/COM2 Pin-out (PB9 Male).....	37
	Figure 5.5 AMAX-5490 COM1/COM2 Pin-out.....	37
	Table 5.11:DB9 Pin-out (Male).....	38
5.2.4	Jumper Switch.....	38
	Figure 5.6 AMAX-5490 Jumper Switch.....	38
	Figure 5.7 AMAX-5490 SW3/SW4.....	38
	Figure 5.8 AMAX-5490 SW5.....	39
	Table 5.12:AMAX-5490 SW5.....	39
	Figure 5.9 AMAX-5490 SW6.....	39
	Table 5.13:AMAX-5490 SW6.....	39
5.3	AMAX-5493M 1-port PROFIBUS DP Master Module.....	40
	Figure 5.10AMAX-5493M Module.....	40
5.3.1	AMAX-5493M Specification.....	40
	Table 5.14:AMAX-5493M General:.....	40
	Table 5.15:AMAX-5493M Serial Communication:.....	40
	Table 5.16:AMAX-5493M Protection:.....	40
	Table 5.17:AMAX-5493M Environment:.....	41
5.3.2	LED Indicator.....	41
	Figure 5.11AMAX-5493M Module LED Indicator.....	41
	Table 5.18:AMAX-5493M Module LED Indicator.....	41
5.3.3	Pin Assignments (DB9 Male).....	41
	Figure 5.12AMAX-5493M COM1 Pin-out.....	41
	Table 5.19:DB9 Pin-out (Male).....	42
5.4	AMAX-5495 2-port CAN Module.....	43
	Figure 5.13AMAX-5495 Module.....	43
5.4.1	AMAX-5495 Specification.....	43
	Table 5.20:AMAX-5495 General:.....	43
	Table 5.21:AMAX-5495 Serial Communication:.....	43
	Table 5.22:AMAX-5495 Protection:.....	43
	Table 5.23:AMAX-5495 Environment:.....	44
5.4.2	LED Indicator.....	44
	Figure 5.14AMAX-5495 Module LED Indicator.....	44
	Table 5.24:AMAX-5495 Module LED Indicator.....	44
5.4.3	Pin Assignments (DB9 Male).....	44
	Figure 5.15AMAX-5495 COM1/COM2 Pin-out.....	44
	Table 5.25:DB9 Pin-out (Male).....	44
5.4.4	Jumper Switch.....	45
	Figure 5.16AMAX-5495 SW1.....	45
	Table 5.26:AMAX-5495 SW1.....	45
5.4.5	Advantech Device Manager / Driver Installation.....	45
	Figure 5.17Driver Installation Step1.....	46
	Figure 5.18Driver Installation Step2.....	46
	Figure 5.19Driver Installation Step3.....	47
5.5	AMAX-5410 2-port GigE Vision Frame Grabber Module.....	48
	Figure 5.20AMAX-5410 Module.....	48
5.5.1	AMAX-5410 Specification.....	48
	Table 5.27:AMAX-5410 General:.....	48
	Table 5.28:AMAX-5410 Ethernet:.....	48
	Table 5.29:AMAX-5410 Protection:.....	48
	Table 5.30:AMAX-5410 Environment:.....	49
5.5.2	LED Indicator.....	49
	Figure 5.21AMAX-5410 Module LED Indicator.....	49
	Table 5.31:AMAX-5410 Module LED Indicator.....	49
5.6	AMAX-5410P 2-port PoE Vision Frame Grabber Module.....	50
	Figure 5.22AMAX-5410P Module.....	50
5.6.1	AMAX-5410P Specification.....	50
	Table 5.32:AMAX-5410P General:.....	50
	Table 5.33:AMAX-5410P Ethernet:.....	50
	Table 5.34:AMAX-5410P Protection:.....	50
	Table 5.35:AMAX-5410P Environment:.....	51

5.6.2	LED Indicator.....	51
	Figure 5.23AMAX-5410P Module LED Indicator.....	51
	Table 5.36:AMAX-5410P Module LED Indicator.....	51
5.7	AMAX-5400E PCIe Mini Card Expansion Module.....	52
	Figure 5.24AMAX-5400E Module.....	52
5.7.1	AMAX-5400E Specifications.....	52
	Table 5.37:AMAX-5400E General.....	52
	Table 5.38:AMAX-5400E Expansion Functions.....	52
	Table 5.39:AMAX-5400E Environment.....	52
5.7.2	LED Indicator.....	53
	Figure 5.25AMAX-5400E Module LED Indicator.....	53
	Table 5.40:AMAX-5400E Module LED Indicator.....	53
5.7.3	PCIe Mini Card Installation Guide.....	53
	Figure 5.26AMAX-5400E PCIe mini card installation guide.....	53

Appendix A Pin Assignments..... 55

A.1	AMAX-5580 COM1/COM2 RS-232/422/485.....	56
	Table A.1: RS-232 Serial Port Pin Assignments.....	56
	Table A.2: RS-422/485 Serial Port Pin Assignments.....	56
A.2	AMAX-5580 USB Connector.....	57
	Table A.3: USB 3.0 Connector Pin Assignments.....	57
A.3	AMAX-5580 HDMI Display Connector.....	57
	Table A.4: HDMI Display Connector.....	57
A.4	AMAX-5580 EtherCAT Connector (Between IO Modules).....	58
	Table A.5: EtherCAT Connector.....	58
A.5	AMAX-5580 LED Indicators.....	59
	Table A.6: PWR LED.....	59
	Table A.7: SATA LED.....	59
	Table A.8: RUN LED.....	59
	Table A.9: ERR LED.....	59
	Table A.10:Over Temp LED.....	59
	Table A.11:ERR VOL.....	59
	Table A.12:BATT LOW.....	59

Chapter 1

Introduction

1.1 Introduction

The AMAX-5580 is an embedded Application Ready Platform (ARP) designed to reduce development time while offering a diverse range of networking interfaces that meet the needs of various projects. Featuring Intel's Core i7/i5/Celeron technology, the AMAX-5580 provides a rich interface with 2 x serial ports, 2 x GbE LAN, and 4 x USB ports. Dual display VGA and HDMI support are also available to meet various high-resolution requirements.

The AMAX-5580 is capable of operating in a wide temperature range from -10 to 60 °C. Leveraging Intel's Skylake series Core i CPU structure, the AMAX-5580 supports dual bank DDR4 to support up to 32GB RAM. The CPU unit also includes expansion capabilities with 1 x Mini-PCIe and a single internal USB port.

With support for multiple operating systems and drivers, including Linux, Windows 7/10 and WES7, users can easily integrate applications into an ARP that provides versatile functions for diverse requirements.

1.2 Safety Precautions

The following sections tell how to make each connection. In most cases, you will simply need to connect to a standard cable.

Warning! *Always disconnect the power cord from your chassis whenever you are working on it. Do not connect while the power is on. A sudden rush of power can damage sensitive electronic components. Only experienced electronics personnel should open the chassis.*



Warning! *Toujours à la terre pour éliminer toute charge d'électricité statique avant toucher AMAX-5580. Appareils électroniques modernes sont très sensibles à charges d'électricité statique. Utilisez un bracelet antistatique à tout moment. Placez tous composants électroniques sur une surface antistatique ou dans un statique-sac blindé.*



Caution! *Always ground yourself to remove any static electric charge before touching AMAX-5580. Modern electronic devices are very sensitive to static electric charges. Use a grounding wrist strap at all times. Place all electronic components on a static-dissipative surface or in a static-shielded bag.*



Caution! *Toujours débrancher le cordon d'alimentation de votre boîtier lorsque vous êtes travailler. Ne branchez pas lorsque l'appareil est allumé. Un afflux soudain de puissance peut endommager les composants électroniques sensibles. Seulement connu personnel de l'électronique devraient ouvrir le châssis.*



1.3 Accessories

Please refer to the following accessory list:

- Power Connector (Advantech P/N: 1652008020-01)

If anything is missing or damaged, contact your distributor or sales representative immediately.

1.4 Product Specifications

1.4.1 AMAX-5580 System Specifications

- General
 - Certification: CE, FCC, UL
 - Dimensions (W x H x D): 139 x 100 x 80 mm
 - Form Factor: Passive cooling and front accessible
 - Enclosure: Aluminum housing
 - Mounting: DIN-rail
 - Weight (Net): 1.3 kg
 - Power Requirement: 24 VDC \pm 20%
 - Power Consumption: 15 W (Typical), 42 W (Max)
 - OS Support: Linux, Microsoft. Windows 7 32/64 bit, Windows 10 32/64 bit
- System Hardware
 - BIOS AMI EFI 128Mbit Flash BIOS
 - Watchdog Timer: Programmable 256 levels timer interval, from 1 to 255 sec
 - Processor:
 - Intel® Core™ i7-6600U 2.6GHz Skylake Dual Core, 4MB L2
 - Intel® Core™ i5-6300U 2.4GHz Skylake Dual Core, 3MB L2
 - Intel® Celeron™ 3955U 2.0GHz Skylake Dual Core, 2MB L2
 - System Chip: Integrated PCH-LP
 - Memory: Built in 4G for Celeron and 8G for Core i5/i7
 - Graphics Engine: Windows 10 32/64 bit. Intel. Gen 9 LP GT2
 - Ethernet: Intel. i210-IT GbE, 802.1Qav, IEEE1588/802.1AS, 802.3az
 - LED Indicators: LEDs for power, storage, 2 x programmable and abnormal status
 - Storage: 1 x M.2 M Key 2280 SSD(SATA Signal only)
 - Expansion:
 - 1 x full-size mPCIe slot, for wireless module or NVRAM module
 - AMAX-5400 function modules expansion from left side (max. 4)
 - AMAX-5000 EtherCAT Slice IO from right side
- I/O Interfaces
 - Serial Ports: 2 x RS-232/422/485, DB9, 50 ~ 115.2kbps
 - LAN Ports: 2 x RJ45, 10/100/1000 Mbps Fast Ethernet
 - USB Ports:
 - 4 x USB ports (4 x USB 3.0 compliant)
 - 1 x internal USB
 - Display:
 - 1 x VGA, supports up to 1920x1200 @ 60Hz 24bpp
 - 1 x HDMI, supports up to 4096x2160 @ 24Hz 24bpp
 - Power Connector: Dual power input with alarm output
 - Grounding Protection: Chassis grounding

-
- Environment
 - Operating Temperature: -10 ~ 60 °C @ 5 ~ 85% RH with 0.7m/s airflow
 - Storage Temperature: -40 ~ 85 °C
 - Relative Humidity: 10 ~ 95% RH @ 40 °C, non-condensing
 - Shock Protection: Operating, IEC 60068-2-27, 10G, half sine, 11 ms
 - Vibration Protection: Operating, IEC 60068-2-64, 1 Grms, random, 5 ~ 500 Hz, 1hr/axis (M.2)

Chapter 2

AMAX-5000 System Overview

2.1 System Overview

AMAX-5000 product family consists of the CPU and each function module. These can be configured to fulfill different application requirements.

The AMAX-5000 product family includes:

1. AMAX-5580 series: Basic CPU module
2. AMAX-54XX series: Left hand side extension modules & PCIe backbone.
3. AMAX-50XX series: Right hand side, slice I/O modules, & EtherCAT backbone.

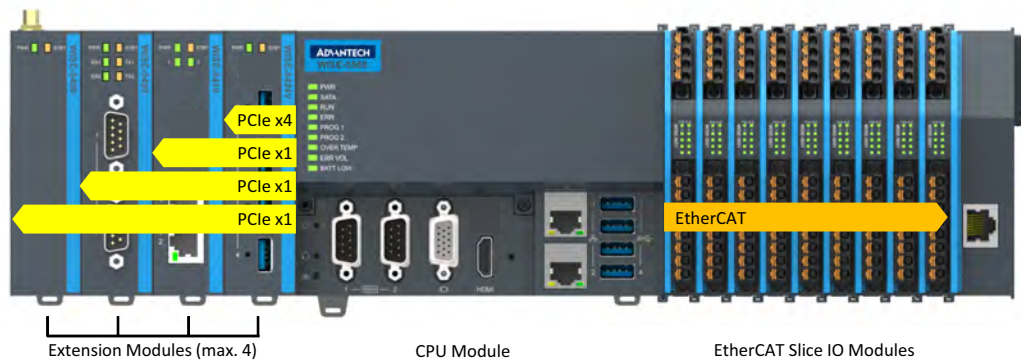


Figure 2.1 MAX-5000 product Family Overview

Basic CPU Module

The AMAX-5580 basic CPU module is a fully functional Embedded IPC without a fan and internal cable. It includes:

- 2 x independent GbE interfaces
- 4 x USB 3.0 interfaces
- VGA and HDMI dual display
- 2 x serial COM port (RS-232/RS-485/RS-422)

The AMAX-5580 Basic CPU module is equipped with four PCIe lanes function extension on the left hand side. The first attached module can use the PCIe x4 resource, while the other three use PCIe x1 resource. The supported functions include USB 3.0, PoE, GbE, RS-232/422/485, Flash Disk, and Wireless Interface.

The right-hand side features the EtherCAT slice I/O extension. This can be distributed and centralized using the EtherCAT network topology. This extension supports various I/O functions, including digital input/output, voltage/current analog input and output, thermal couple, RTD, and counter/encoder.

The operating system is installed on a reliable industrial grade M.2 SSD.

The 2MB MRAM (NVRAM, Non-Volatile) is an option on the AMAX-5580 Basic CPU module. It can be installed in the internal PCIe-mini card slot. In the event of a power failure, the data in the MRAM will be kept and available for used after a CPU restart.

Power System

AMAX-5000 Series supports 24VDC power input. Please use an external adapter if the power source in the control cabinet is not 24VDC.

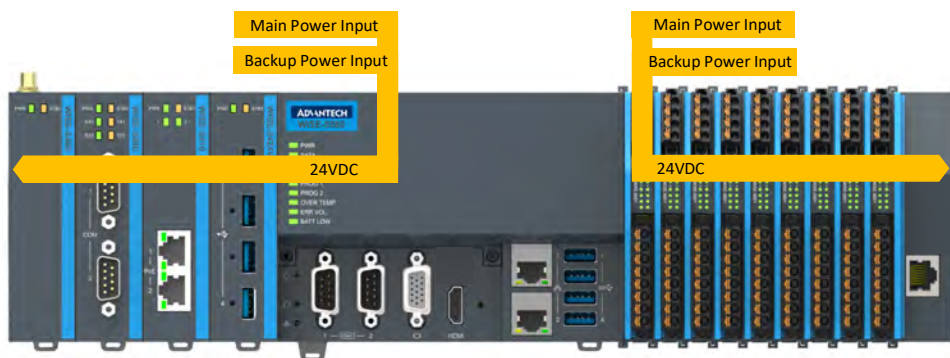


Figure 2.2 Power System of AMAX-5000

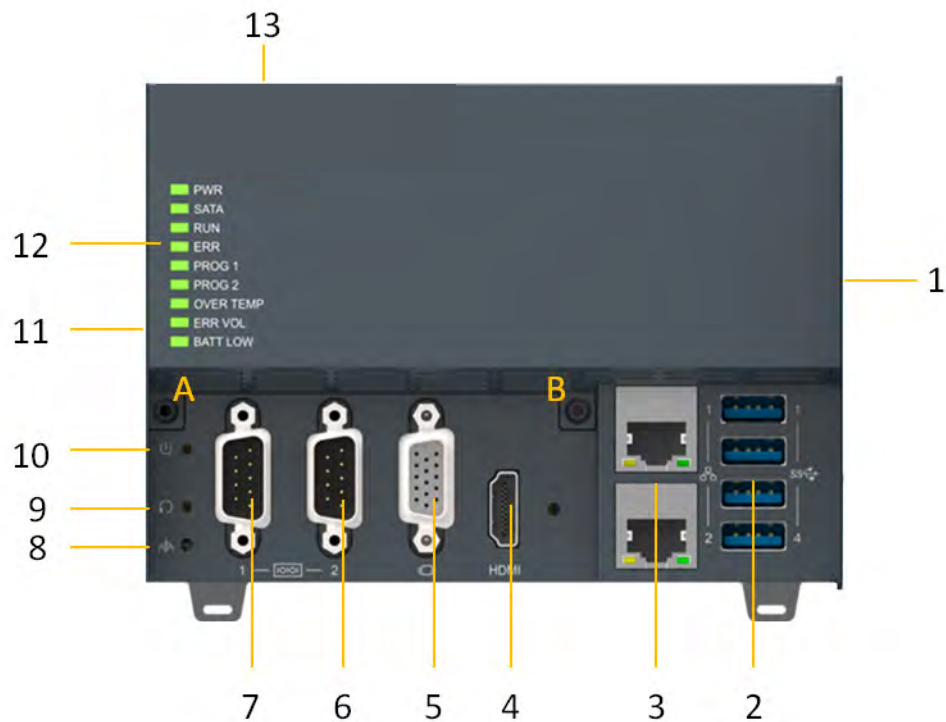
There are 2 independent power systems for AMAX-5000; one is from the CPU module and supply on the left hand side of the extension modules. The other is for right hand side slice IO only. Both power systems are 24 VDC with +/- 20% variation tolerance. They both also support dual power input for main and backup power input. Once the main power fails, the backup power can supply power to system to work and a hardware alarm will be triggered to report the situation.

Software Architecture

AMAX-5000 integrates with 3S CODESYS become a powerful IEC-61131-3 Controller. With the EtherCAT support in CODESYS, AMAX-5000 is possible to implement very fast control processes in microsecond range. It is also possible to execute Motion Control tasks with potentially up to 256 axis. Depending on the required cycle time, different number of servo axis can be controlled. Even special functions such as flying saw, electronic gearbox and cam plate can be realized easily through the drag and drop function block diagram.

Without IEC-61131-3 Softlogic, AMAX-5000 is also a powerful embedded IPC for big data collection /analytics, or even vision inspection integration. With full function support of SDK/API in C/C++ and C#. NET environment, user can implement the algorithm easily and communicate the data with other node or cloud services.

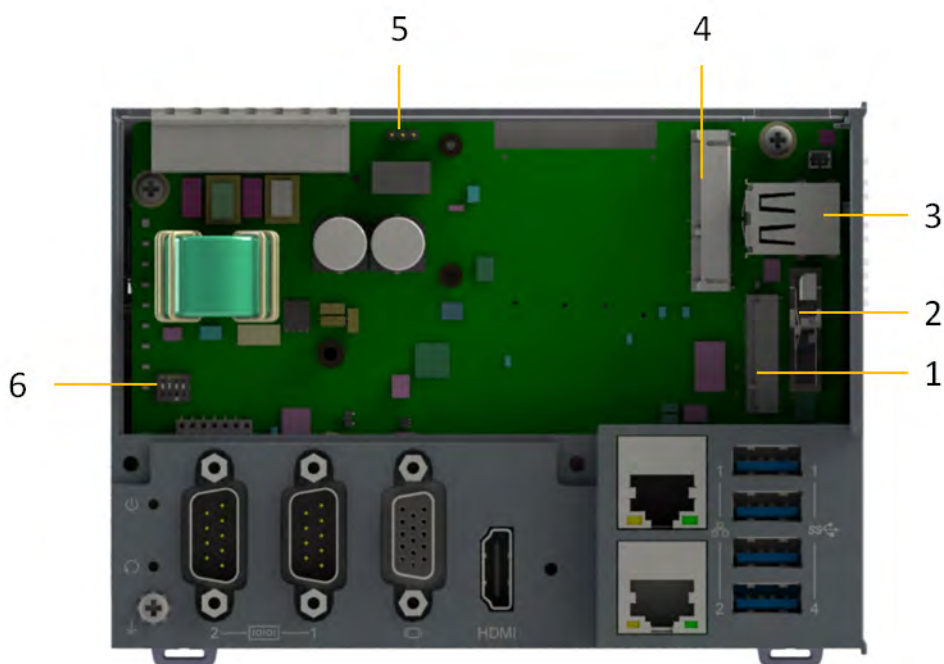
2.2 Configuration of CPU Module, AMAX-5580



Front View of AMAX-80

Legend of Configuration for the AMAX-80 CPU Module

No.	Component	Description
1	EtherCAT Slice Connection	Connection for EtherCAT Slice IO extension modules.
2	USB Interface	Interfaces for peripherals such as mouse, keyboard or USB memory.
3	RJ45 Ethernet Interface	For connecting to local networks, internet or EtherCAT.
4	HDMI Interface	Digital interface for a monitor or panel with audio output
5	VGA Interface	Analogue interface for a monitor or panel
6 & 7	DB9 Interface	Interface for serial communication (RS-232/422/485 selectable in BIOS)
8	Shielding Ground Connection	Screw to fix the shielding ground connection
9	Reset Button	Hidden button for PC hardware reset function
10	Power Button	Hidden button for PC power function
11	Multi-function Connection	Connection for PCIe extension modules
12	Diagnostic LEDs	Diagnostic LEDs for CPU module
13	Power Input Wiring Terminal	7-pin terminal for dual 24VDC power input wiring and alarm output
A & B	Screws	Screws to open the front cover for internal configuration



Internal configuration under the front cover of AMAX-80

Legend of Configuration Inside the AMAX-80 CPU Module

No.	Component	Description
1	M.2 Connector (M Key)	To install M.2 SSD for operation system installation.
2	RTC Battery	Battery to keep RTC and BIOS settings
3	Internal USB Interface	Interfaces for peripherals such as USB memory or USB dongle key.
4	PCIe-mini card slot	Slot for PCIe-mini cards, such as NVRAM card or Embedded Wireless Module (EWM)
5	Jumpers	Jumpers for power alarm output (NO/NC) (Refer to p.20 ERR-LOGIC1)
6	DIP Switch	For VGA, USB, AT power setting. (Refer to p.20 ERR-LOGIC1)

2.3 Module Overview

2.3.1 AMAX-54XX PCIe Expansion Module

AMAX-5580 provides PCIe extension interfaces from the left-hand side. The following modules are available:

Table 2.3: AMAX-5400 Series Extension Modules

Function	Module	Description
Wireless Expansion	AMAX-5400E	PCIe mini card expansion module
GigE Communication	AMAX-5410	2-port GigE Vision Frame Grabber Module
PoE Communication	AMAX-5410P	2-port PoE Vision Frame Grabber Module
USB 3.0 Interface	AMAX-5424V	4-port USB3.0 Vision Frame Grabber Module
Serial Communication	AMAX-5490	2-port Isolated RS-232/422/485 Communication Module
Profibus DP Module	AMAX-5493M	1-port PROFIBUS DP Master Module
CAN Module	AMAX-5495	2-Port CAN Module

Note! *EtherCAT supports up to 65535 SubDevices in one network. However more devices would need longer cycle time to return all of the real-time data to MDevice.*



2.3.2 AMAX-50XX EtherCAT I/O Modules

The right-hand side of AMAX-5580 features interfaces for the EtherCAT Slice I/O modules. The following table covers current/y supported I/O modules:

Table 2.4: AMAX-5000 Series Extension Modules

Function	Module	Description
Power Input and Coupler	AMAX-5001	Power Input with 4-ch DI Module
	AMAX-5074	EtherCAT Coupler with ID Switch Module
	AMAX-5079	EtherCAT Extension Module
Analog I/O	AMAX-5015	4-ch RTD Input Module
	AMAX-5017C	6-ch Current Input Module
	AMAX-5017V	6-ch Voltage Input Module
	AMAX-5017H	4-ch High-Speed Analog Input Module
	AMAX-5018	6-ch Thermocouple Input Module
	AMAX-5024	4-ch Analog Output Module
	Digital I/O	AMAX-5051
AMAX-5052		16-ch Digital Input Module
AMAX-5056		8-ch Sink-type Digital Output Module
AMAX-5056SO		8-ch Source-type Digital Output Module
AMAX-5057		16-ch Sink-type Digital Output Module
AMAX-5057SO		16-ch Source-type Digital Output Module
AMAX-5060		4-ch Relay with 2-ch DI Module
Counter/Encoder	AMAX-5080	2-ch Counter/Encoder Input Module
	AMAX-5081	1-ch TTL/RS-422 Encoder/Counter Module
	AMAX-5082	1-ch SSI Encoder Module
Digital I/O with Timestamp	AMAX-5051T	8-ch Digital Input Module (With 2-ch Timestamp)
	AMAX-5056T	2-ch Timestamp Digital Output Module

With the PCIe and EtherCAT interface, AMAX-5580 can optionally equip some functional modules to fulfill application requirements.

Below are examples:

- Vision + Motion Controller

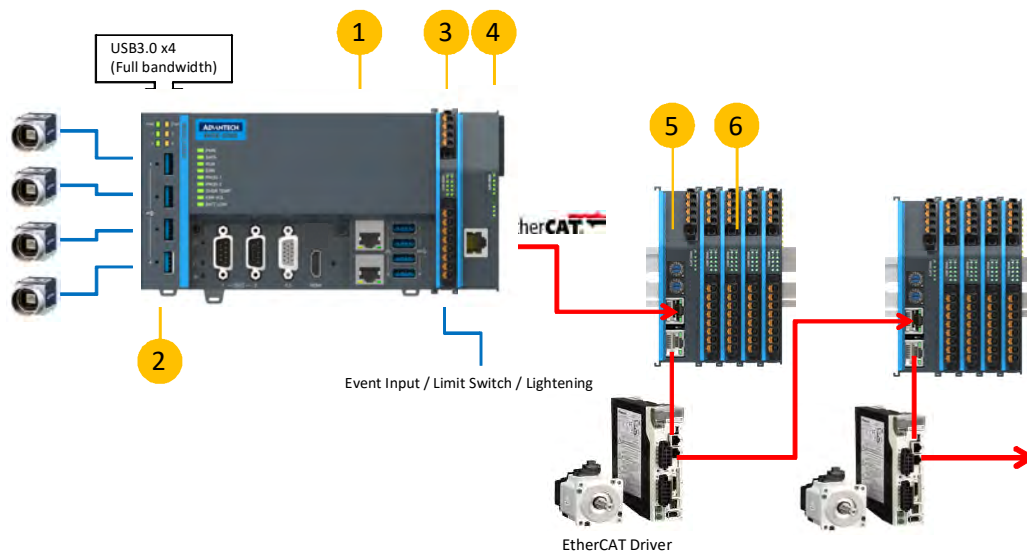


Figure 2.5 AMAX-5000 System Configuration for Motion + Vision Application

Table 2.5: AMAX-5000 System Configuration for Motion + Vision Application

No.	Part Number	Description
1	AMAX-5580	CPU Module to integrate Motion and Vision application
2	AMAX-5424V	4 x USB 3.0 expansions for cameras
2a	AMAX-5410 (option)	2 x GibE expansions for cameras
2b	AMAX-5410P (option)	2 x PoE expansions for cameras
3	AMAX-5001	24VDC Power input module for AMAX-5000 Slice I/O, include 4DI
4	AMAX-5079	Extend EtherCAT to next station
5	AMAX-5074	EtherCAT bus coupler
6	AMAX-50XX	AMAX-5000 Slice I/O to fulfill the station I/O requirements

■ Data Concentrator

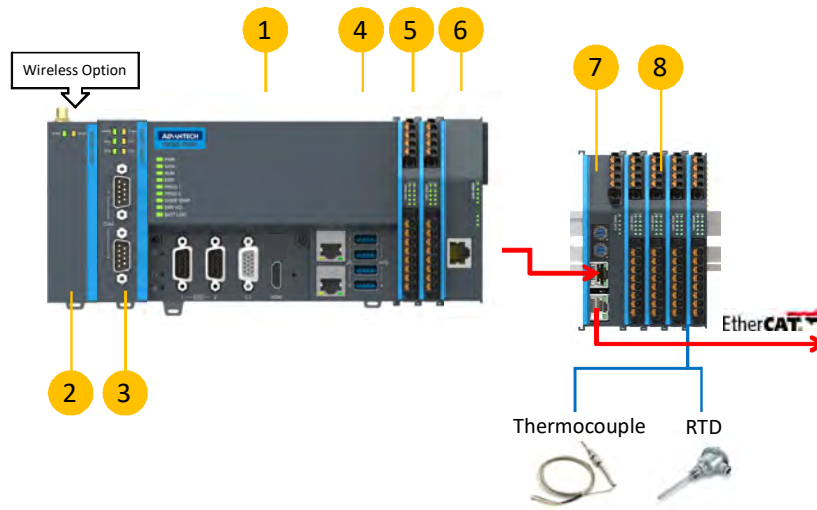


Figure 2.6 AMAX-5000 System Configuration for Big Data Edge Concentrator

Table 2.6: AMAX-5000 System Configuration		
No.	Part Number	Description
1	AMAX-5580	CPU Module to handle big data applications
2	AMAX-5400	Wireless expansion option for Wi-Fi/3G/ LTE
3	AMAX-5490	2x Isolation COM port expansion, RS-232/422/485
4	AMAX-5001	24VDC Power input module for AMAX-5000 slice IO, include 4DI
5	AMAX-50XX	AMAX-5000 Slice IO to fulfill the IO requirement of the station
6	AMAX-5079	Extend EtherCAT to next station
7	AMAX-5074	EtherCAT bus coupler
8	AMAX-50XX	AMAX-5000 Slice IO to fulfill the IO requirement of the station

2.4 CPU Types

Control IPC Barebone

AMAX-5580 is a Control IPC barebone system for users to configure according to their application. Users can install a supported OS and get driver support from the Advantech website. However, we suggest users to order an embedded OS from Advantech which are optimized OS images configured for the best performance.

CODESYS Ready PAC

AMAX-5580 can easily integrate IEC-61131-3 softlogic software CODESYS to become a PAC (Programmable Automation Controller).

CODESYS provides 3 levels of software runtime engine for different application scenarios and also provides HMI functions for data visualization.

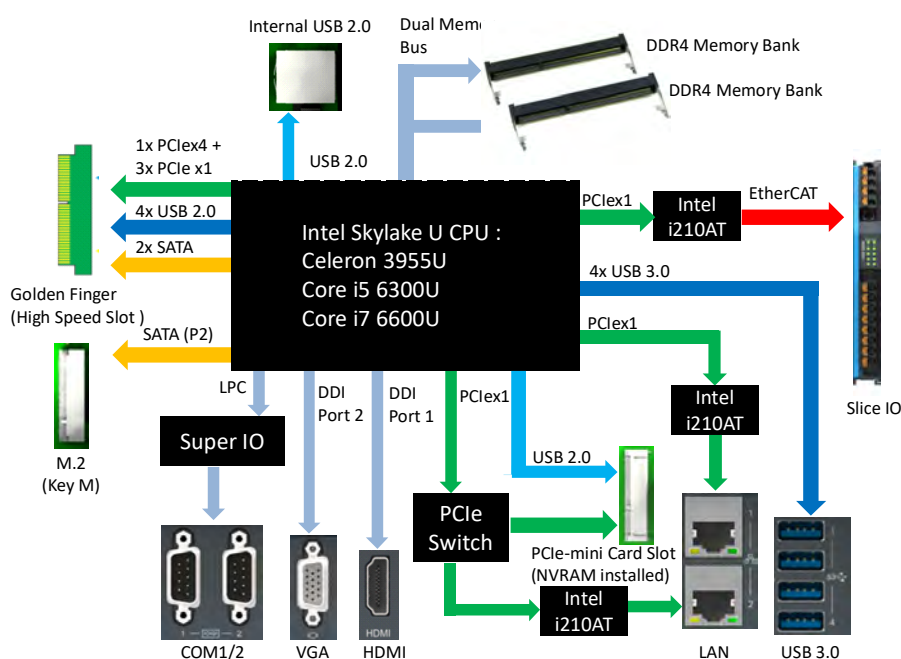
Table 2.7: AMAX-5580 Control IPC Product Offering

Category	Control IPC Barebone		
P/N	AMAX-5580-C3000A	AMAX-5580-54000A	AMAX-5580-74000A
CPU	Celeron 3955U 2.0GHz	Core™ i5-6300U 2.4GHz	Core™ i7-6600U 2.6GHz
RAM	4G DDR4	8G DDR4	8G DDR4

Table 2.8: AMAX-5580 CODESYS Ready PAC Product Offering

Category	CODESYS Ready PAC		
P/N	AMAX-658-6CCW00A	AMAX-658-65CW00A	AMAX-658-67CW00A
CPU	Celeron 3955U 2.0GHz	Core™ i5-6300U 2.4GHz	Core™ i7-6600U 2.6GHz
RAM	4G DDR4	8G DDR4	8G DDR4
Storage (M.2)	128 GB	128 GB	128 GB
OS	Win10 LTSC 64bit	Win10 LTSC 64bit	Win10 LTSC 64bit
NVRAM	2MB	2MB	2MB
SW	CODESYS V3 Pure Control with Visu(HMI)	CODESYS V3 Pure Control with Visu(HMI)	CODESYS V3 Pure Control with Visu(HMI)

2.5 CPU Architecture

**System Architecture of AMAX-80**

Note! LAN2 and mPCIe slot Shared PCIe resources



Chapter 3

Initial Setup

3.1 Selecting the Right Power Supply Unit

The AMAX-5580 needs an external 24VDC power input from the screw terminal on the top. This power input will supply power to the main CPU module (AMAX-5580) and left-hand-side PCIe expansion modules (AMAX-54XX). The pin definition is as follows:

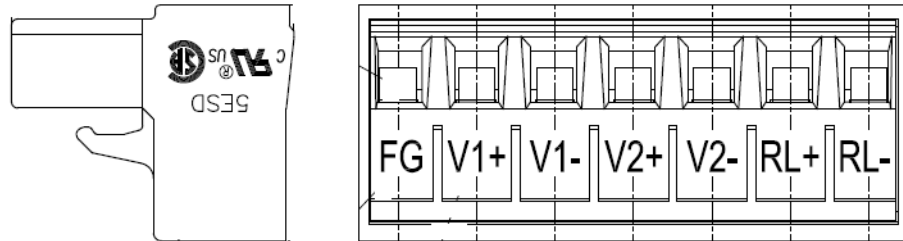


Table 3.1: Pin Definition of Power Input Terminal

No	Name	Function
1	FG	Field Ground Connection
2	V1+	Power Input 1
3	V1-	
4	V2+	Power Input 2
5	V2-	
6	RL+	Power Abnormal Relay Output (Normal Close/Open changeable) * Refer to p.20 ERR-LOGIC1
7	RL-	

To keep the system working properly, the user has to calculate the system power consumption to select the proper power supply. The selected power supply should provide more power than the max power consumption of the system.

For example:

Table 3.2: Calculating System Power

Item	Model	Function	Max Power Consumption
1	AMAX-5580	Main CPU Module	42W
2	AMAX-5424V	4 x USB	15W
3	AMAX-5490	2 x Serial Port	2W
		Sub-total	59W

We suggest adding a tolerance on the total power consumption and also consider the power de-rating effect in your application environment. Below is a suggestion list of verified power supply units:

Table 3.3: List of Verified Power Supply Units

Item	Part Number	Description
1	PSD-A60W24	DIN Rail AC to DC 100-240V 60W 24V

Table 3.3: List of Verified Power Supply Units

2	PSD-A120W24	DIN Rail AC to DC 100-240V 120W 24V
3	96PSD-A240W24-MN	DIN Rail AC to DC 100-240V 240W 24V

The default power mode is AT mode, the system will boot as long as there is one valid power input from 1 or 2. Please check below LED to make sure the system is properly powered.

Table 3.4: LED Power Status

Model	LED	Status	Definition
AMAX-5580	PWR	Green	System Power OK
		Orange	System Standby
AMAX-54XX	PWR	Green	System Power OK
		STBY	Orange

NOTE: Please do not assemble or disassemble the system while the PWR /STBY LED is on. Please make sure power is completely off and every LED is off before changing hardware.

To enhance the system availability, AMAX-5580 provides dual power input functions to support main power input and backup power input. If either power input encounters trouble it will trigger the alarms below:

1. The LED "ERR VOL" turns "On"
2. The RL+ /RL- on the **Power Input Terminal changes** (Refer to p.20 ERR-LOG-IC1)
3. The system tag changes and can be accessed remotely.

3.2 System Configuration and Installation

Please refer to section 1.1, table 2 to do the necessary configuration or maintenance. Please follow below step to open the front cover to do access the internal system components:

Step1: Remove the 7-pin power input wiring terminal on the top of the device

Step2: Remove the USB/HDMI fix kit from the front cover (Option)

Step3: Remove 2 screws on the lower side of the front cover

Step4: Move the cover upward slightly and move forward.

Do the following:

- Install the M.2 SSD storage
This is the SSD storage for the operating system, we suggest using industrial grade SSD to ensure system reliability. Please refer to the datasheet to check the parts which have been verified as working well with the system.
After installing the SSD, please fix the SSD in the slots with the screws provided.
- Install the PCIe-mini card module
Users can install a PCIe-mini card module in the PCIe-mini card slot. For example:

- NVRAM module: PCM-2300MR-AE
Provides non-volatile memory for the system. This function is usually necessary for running a softlogic system.
- Advantech EWM wireless module:
Includes Wi-Fi, 3G, LTE, GPS function available for optional expansion, and one hole reserved for antenna SMA connector on the top cover.
- Other 3rd party PCIe-mini card modules:
This PCIe-mini card uses PCIe x1 and USB 2.0 signals, please check the signal compatibility and driver availability first.

After inserting the PCIe-mini card module, fix with the screws provided.

And also install the related driver in the operating system to enable the functionality.

- Change the Battery
The battery keeps the BIOS setting and CMOS. Please change the battery when the “BATT LOW” LED status is on. The specification is as below

Table 3.5: Battery

Type	Lithium Carbon-Monoflouride
Size	BR2032
Operation Temperature	-40 - 85 °C
Advantech Part Number	1760000897-11

- Install the USB device in the internal USB 2.0 port
AMAX-5580 reserves one port inside the chassis for important USB devices. The USB device could be:
 - USB dongle key for software
 - Extra USB storage for data
- Jumper/DIP switch settings for special functions
Below is the SW5 function

Table 3.6: SW5 Function

DIP	Function	Status
1	Power for USB1&2 in standby mode	ON: USB supply 5V OFF: None (default)
2	Power for USB3&4 in standby mode	ON: USB supply 5V OFF: None (default)
3	VGA force output	ON: No output load OFF: Simulate output load (default)
4	Power AT mode	ON: Hardware AT mode OFF: Simulated AT mode (default)

- Jumper ERR_LOGIC1
This jumper sets the relay for power alarm output.

Table 3.7: Jumper ERR_LOGIC1

Position of Jumper	Status
PIN 1-2 short	Normal Open
PIN 2-3 short	Normal Close

3.3 Mounting

3.3.1 Attaching the AMAX-54XX left-hand-side module (option)

Left-hand-side PCIe module should be assembled before mounting on the DIN-rail. Please follow steps below to install.

Step1: Use the guide pin to direct the module in the right position.

Step2: Push the golden finger into the slot.

Step3: Affix the screws to make sure the combination is tight.

Step4: Follow the same steps to stack the 2nd and next AMAX-54XX module.

3.3.2 Permissible installation positions

Note! The CPU module may overheat if the installation position is incorrect or minimum distances are not adhered to.



AMAX-5580 uses a passive cooling system and does not need a correct mounting position to ensure optimum heat dissipation.

See the below requirements for the control cabinet:

1. Please make sure the temperature of the control cabinet is within the operating temperature of AMAX-5580, which is $-10\sim 60\text{ }^{\circ}\text{C}$.
2. Please adhere to the minimum clearance of 50 mm above and below the CPU module, in order to ensure proper ventilation.
3. Select a suitable control cabinet enclosure to ensure the heat can be dissipated from the control cabinet.

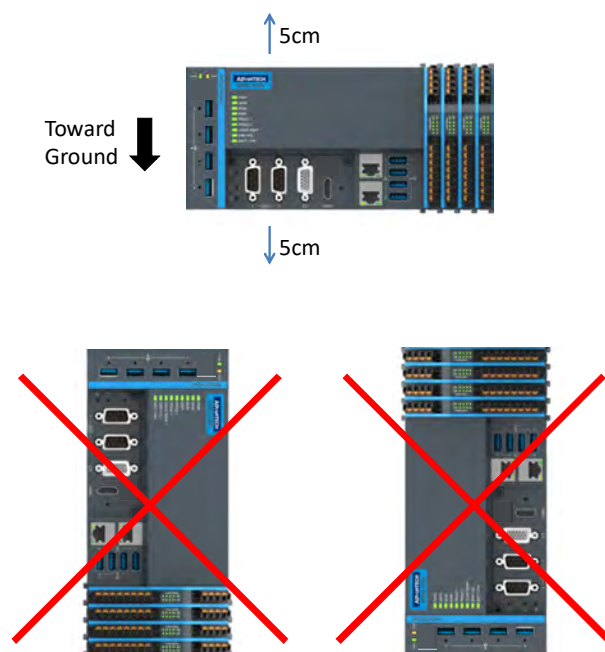


Figure 3.1 Mounting position for AMAX-5580

3.3.3 Attaching on the DIN-rail

Please follow the steps below to secure AMAX-5580 on the DIN-rail:

Step1: Unlock the latches at the bottom of AMAX-5580 and AMAX-54XX

Step2: Place the AMAX-5580 on the DIN-rail, hang the device on the top side of the DIN-rail then push the lower side of the device onto the DIN-rail.

Step3: Lock the latches

3.3.4 Install the AMAX-50XX right-hand-side modules

Note! The AMAX-50XX on the right-hand-side has independent power system. AMAX-5001, smart power input terminal should be the first module to supply the power to the right side AMAX-50XX modules.



Follow the steps to slide in the modules one by one:

Step1: Unlock the latched at the bottom of AMAX-50XX

Step2: Remove the protection cover on the right-side of AMAX-5580, and slide in the module on the side of the AMAX-5580

Step3: Touch the orange part on the lower side to release the latch to lock the module on the DIN-rail

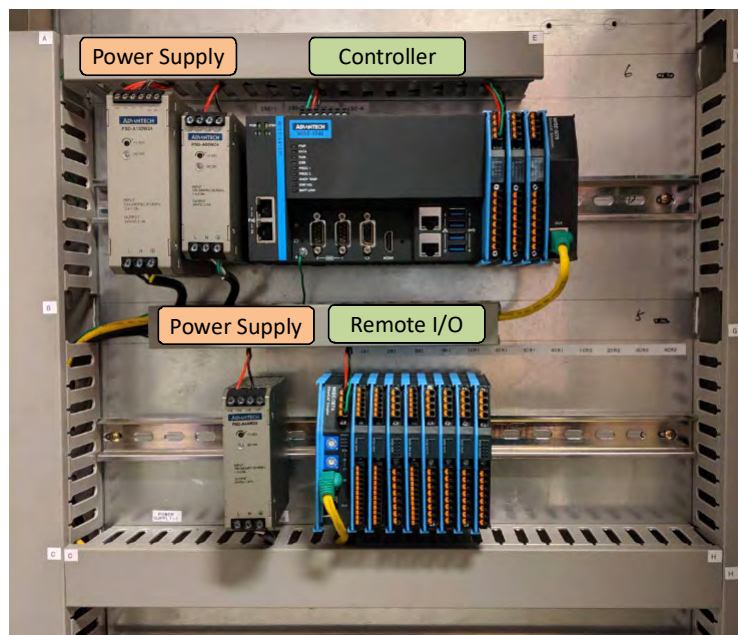


Figure 3.2 AMAX-5000 installed in a control box

3.3.5 Serial Port Isolation Recommendation

For better surge protection of AMAX-5580 from external serial communication, it's recommended to install some isolation device. For example, local left-side expansion module AMAX-5490 or ADAM-4520, integrated with on board serial ports, both ensure surge protection from external CPU units.



Figure 3.3 AMAX-5490 Serial Expansion module installation example



Figure 3.4 ADAM-4520 Isolated RS-232 to RS-422/485 Converter installation example

3.4 BIOS Setup

3.4.1 How to enter the BIOS?

First, plug-in the 24VDC input power to boot the AMAX-5580 or reboot it if it is running. Second, press the “Delete” key while the AMAX-5580 is performing the power-on self-test (POST). If you can hear the “beep” sound from your AMAX-5580 controller, you are successfully accessing the BIOS.

3.4.2 BIOS configuration

When you enter the BIOS, the **Main** tab lists overall information to the AMAX-5580 controller; you will see BIOS information and Processor Information on this page.

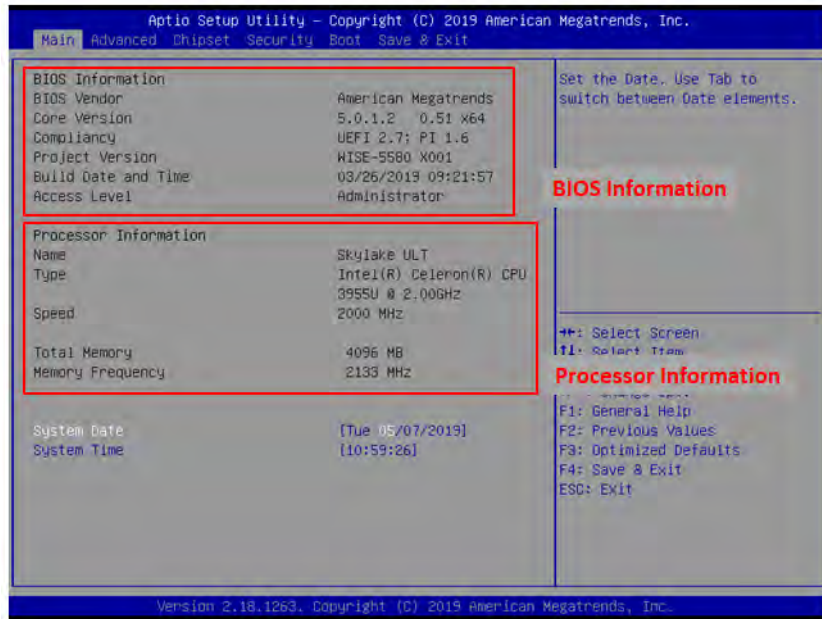


Figure 3.5 BIOS and processor information

3.4.3 Hardware Monitor

The Hardware Monitor option under the Advanced tab shows all hardware monitor sensors real-time values.

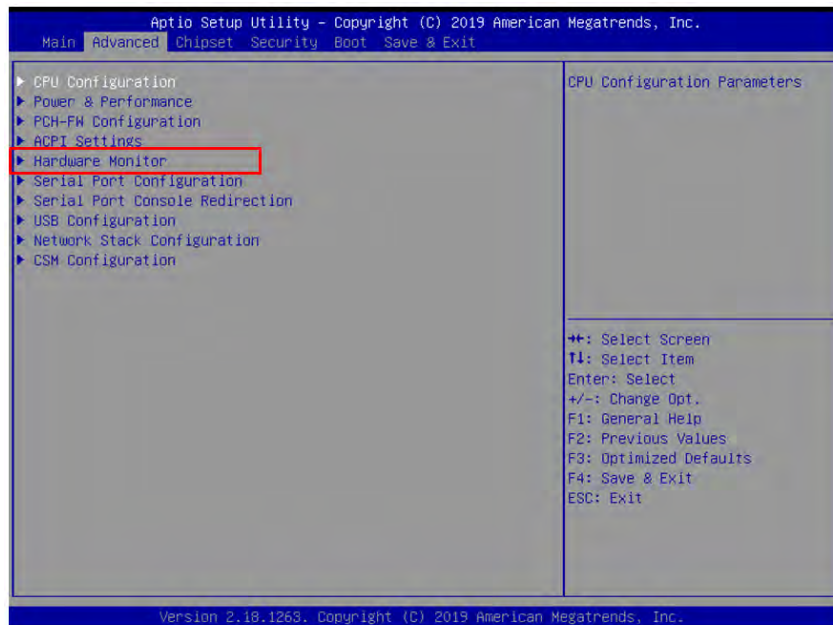


Figure 3.6 Configuration list under Advanced tab in BIOS

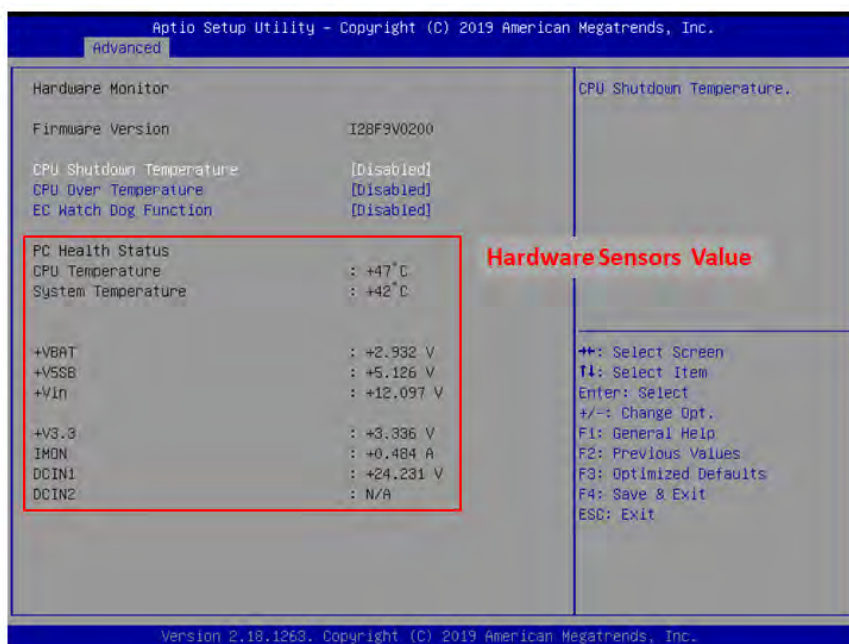


Figure 3.7 The Hardware Sensors Value showed in BIOS

3.4.3.1 CPU Overheating Temperature and CPU Shutdown Temperature

There are many factors that could lead to CPU temperature overheating, such as improper system installation, high ambient temperatures or poor ventilation.

You can set the CPU Over Temperature value in BIOS configuration and the LED indicator (OVER TEMP) on the front panel will be turned on when the CPU temperature becomes abnormal. In order to protect your system from overheating; you could also set the CPU Shutdown Temperature value. If the CPU overheats, the system will shut down automatically.

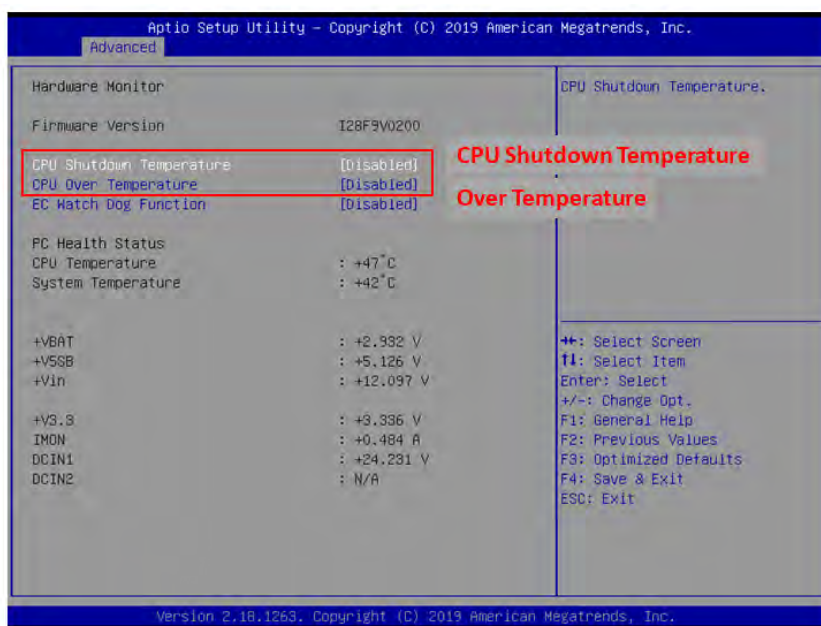


Figure 3.8 The CPU shutdown temperature and overheating temperature configuration in BIOS

3.4.3.2 EC Watch Dog Function

EC Watch Dog Timer can be easily configured under the Hardware Monitor page. Like the figure below, users can choose a certain time interval to reboot the system if the computer fails to reset the watchdog.

Furthermore, AMAX-5580 also supports numerous Watchdog Timer API to allow users to build their own applications.

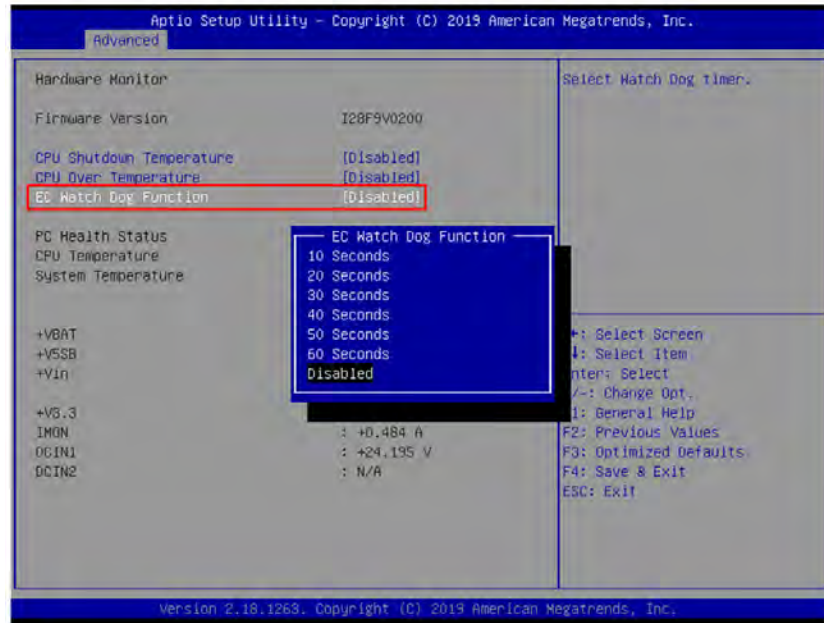


Figure 3.9 EC watch dog timer configuration in BIOS

3.4.4 Serial port configuration

In order to configure the two DB9 serial ports at the front panel into the same protocol you're connecting, you may enter the Advanced tab and select Serial Port Configuration to enable the serial port and select the protocol type.

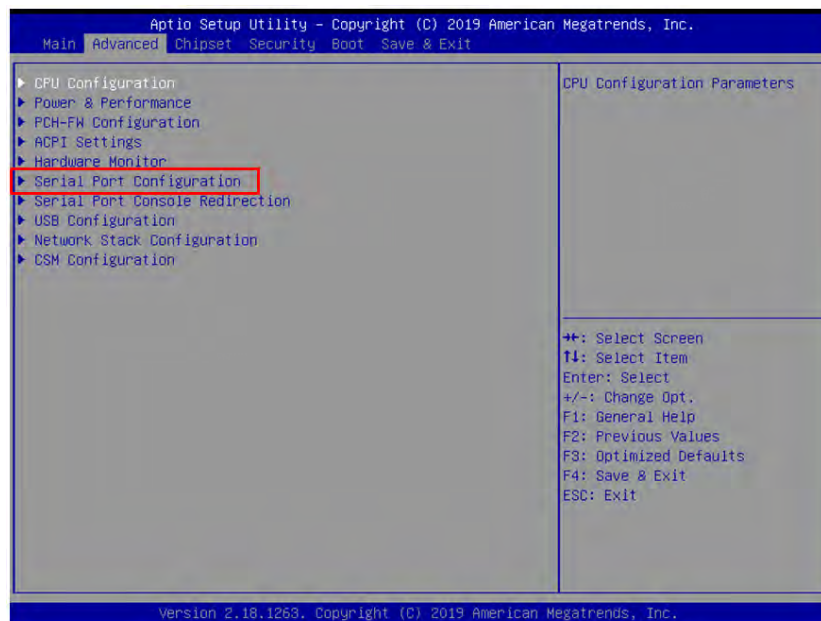


Figure 3.10 Serial port configuration in BIOS

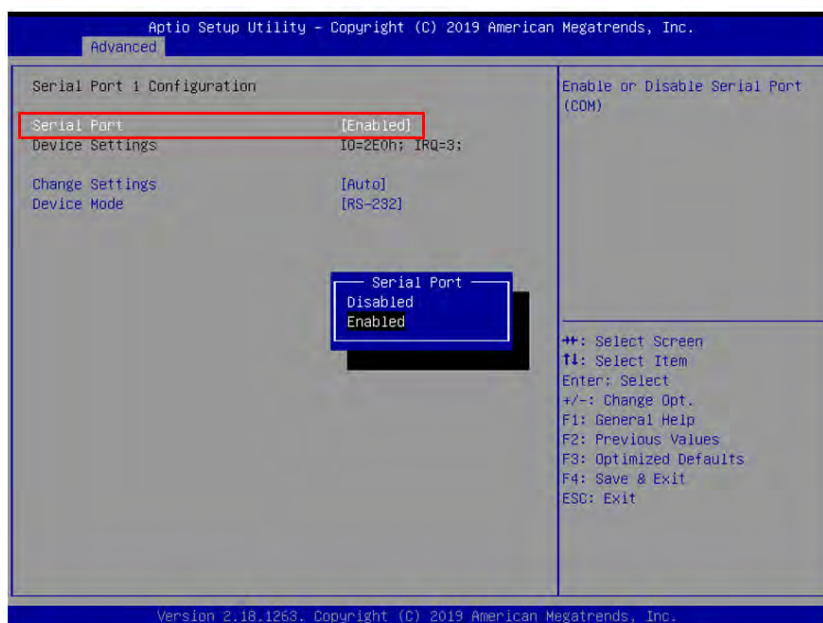


Figure 3.11 Enabling serial port in BIOS

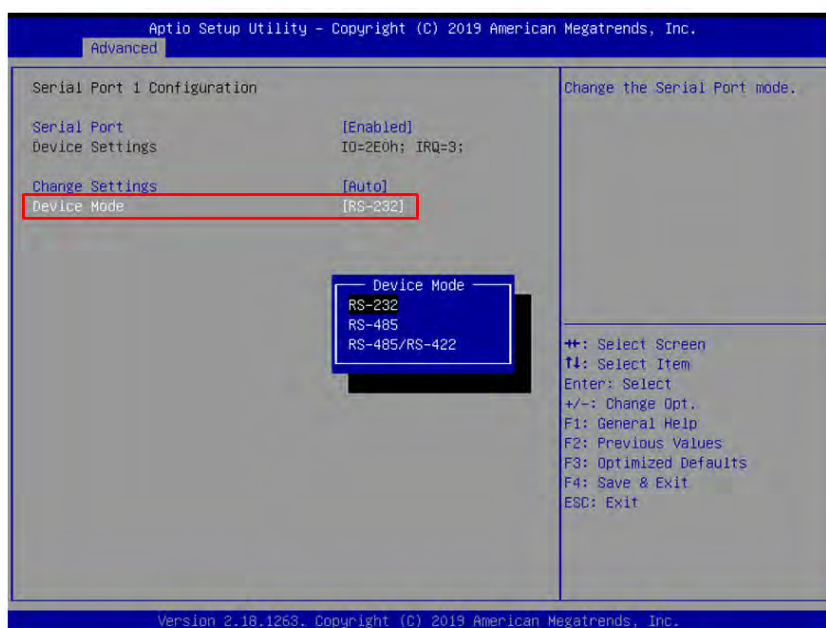


Figure 3.12 Configure serial port protocol type in BIOS

3.4.5 Save settings and Return to default

After configuring the BIOS, please press F4 key to save the settings and exit the BIOS. If you want to return the setting to default, please press F3 key to return the optimized default setting.

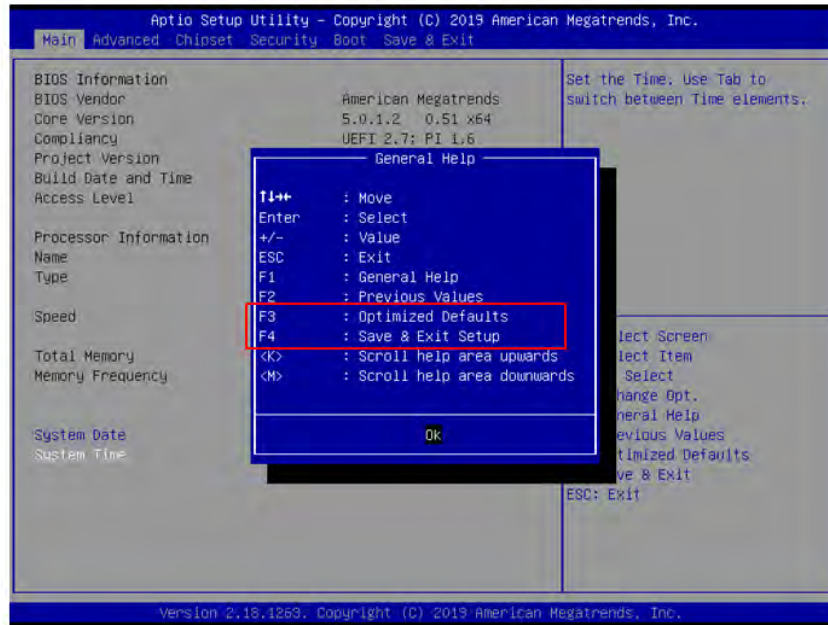


Figure 3.13 Hotkey to Optimized Defaults and Save & Exit Setup in BIOS

Chapter 4

Advantech Software Tools

4.1 Software Tools for Advantech Windows

For Advantech Windows based systems only!

AMAX-5580 controller also has useful utilities and drivers to help you monitor your device or build your own applications for advanced uses. All the utilities and drivers are bundled in the OS image which has already been pre-installed in your AMAX-5580.

4.2 Verinfo

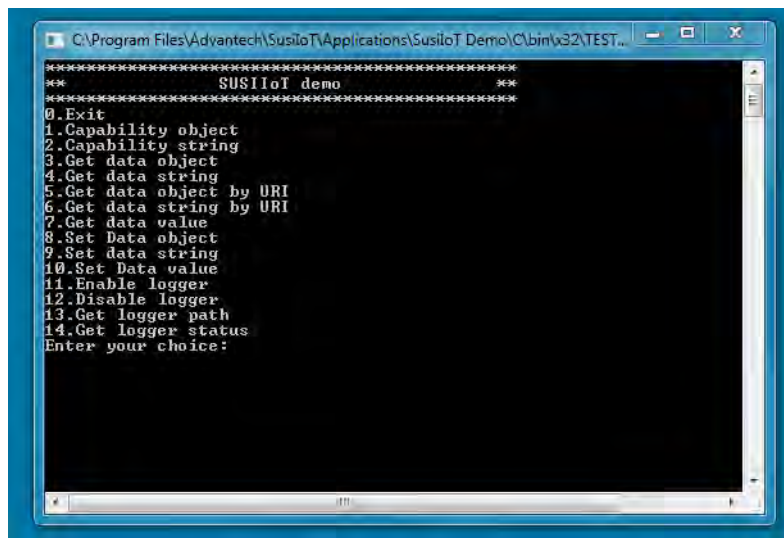
The Advantech Verinfo utility provides an easy way to list all system information of the AMAX-5580 you're using, which includes: hardware info, system info, image version, build number, release date, and updated packages for WES OS.



You can find the utility by the following path in AMAX-5580:
C:\Program Files\Advantech\VerInfo\VerInfo.exe

4.3 Susi IOT

Advantech Susi IOT provides an interface to have an overview of all system information on your AMAX-5580 platform.

A screenshot of a Windows command prompt window titled "C:\Program Files\Advantech\SusiloT\Applications\SusiloT Demo\C\bin\vs2\TEST...". The window displays a menu for the "SUSIoT demo" application. The menu items are: 0.Exit, 1.Capability object, 2.Capability string, 3.Get data object, 4.Get data string, 5.Get data object by URI, 6.Get data string by URI, 7.Get data value, 8.Set Data object, 9.Set data string, 10.Set Data value, 11.Enable logger, 12.Disable logger, 13.Get logger path, and 14.Get logger status. The prompt "Enter your choice:" is visible at the bottom of the menu.

```
C:\Program Files\Advantech\SusiloT\Applications\SusiloT Demo\C\bin\vs2\TEST...
*****
**                               **
*****
SUSIoT demo
*****
0.Exit
1.Capability object
2.Capability string
3.Get data object
4.Get data string
5.Get data object by URI
6.Get data string by URI
7.Get data value
8.Set Data object
9.Set data string
10.Set Data value
11.Enable logger
12.Disable logger
13.Get logger path
14.Get logger status
Enter your choice:
```

You can find the utility by the following path in AMAX-5580:

C:\Program Files\Advantech\SusiloT\Applications\SusiloT Demo

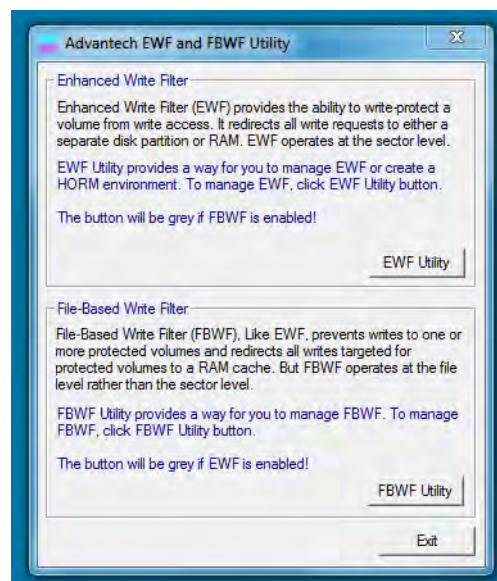
4.4 EAPI

Embedded API (EAPI) follows PICMG EAPI to specify functions for industrial application and to provide a common programming interface. The target is to avoid software modifications when changing device modules. EAPI will cover all interfaces in the device to unify the software control:

You can find developer guide and sample codes by the following path in AMAX-5580: **C:\Program Files\Advantech\PlatformSDK**

4.5 AdvWF

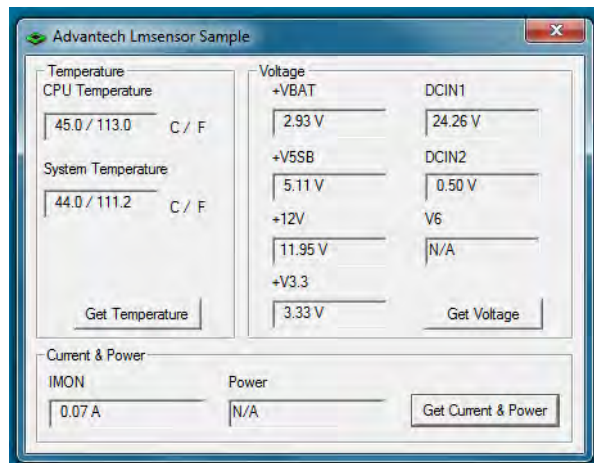
Advantech AdvWF utility provides two key Windows XP Embedded enabling features (EEFs), Enhanced Write Filter (EWF) and File-Based Write Filter (FBWF) features, please find details in the Advantech EWF&FBWF User Guide.



You can find user guide and utility by the following path in AMAX-5580: **C:\Program Files\Advantech \Utility**

4.6 Advantech Lmsensor

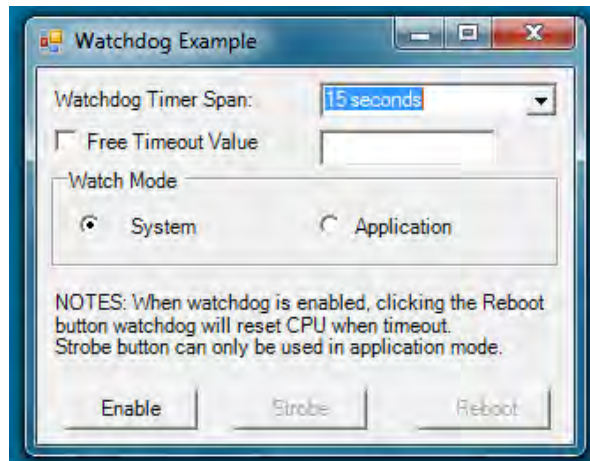
The Advantech Lmsensor device driver provides functions to maximize the hardware's performance. The driver allows you to easily perform versatile Lmsensor operations in programs developed with tools like Microsoft Visual C++, Embedded Visual C++, and other programming languages in different Windows system platforms. This driver also provides sample applications so you can modify sample code to meet your needs.



You can find examples and the user manual by the following the path in AMAX-5580:
C:\ Program Files (x86)\Advantech\Lmsensor

4.7 Advantech Watchdog KMDF Driver

Advantech Watchdog KMDF Driver contains a set of functions and related structures that can be used in various application programs for interfacing with KMDF Drivers. The APIs support Microsoft Visual C++, Microsoft Visual Basic, and Microsoft C# development environments. You can directly write applications with windows API. Examples of VC, VC.NET, VB.NET, and C#.NET are supplied in the package, providing a reference for you to develop applications. When development work is completed, you can use test tools to verify if functions of your application are working correct.



You can find examples and user manual by the following the path in AMAX-5580: **C:\Program Files (x86)\Advantech\Watchdog**

Chapter 5

PCIe Expansion
Module

5.1 AMAX-5424V 4-port USB3.0 Vision Frame Grabber Module

The AMAX-5424V provides four extra USB3.0 ports to the AMAX-5580 controller.



Figure 5.1 AMAX-5424V Module

5.1.1 AMAX-5424V Specification

Table 5.1: AMAX-5424V General:

Certification	CE, FCC class A
Connector	4 x USB 3.0 Type A
Enclosure	Aluminum housing
Power Consumption	2.5W@24VDC
Bus Interface	PCIe x4 (1st slot on the left side of AMAX-5580)
LED Indicator	PWR, Standby

Table 5.2: AMAX-5424V USB Port:

Host Bus	4-lane Gen 2.0 PCIe interface, compliant with PCI Express Base Specification, Revision 2.0
Controller	Host Controller - Fresco FL1100 Compliant with USB 3.0 Specification and Intel® xHCI Specification, Revision 1.0
Max. current	1500 mA maximum per port
Data Transfer Rate	Super Speed (5.0 Gbps); High Speed (480.0 Mbps); Full Speed (12.0 Mbps); Low Speed (1.5 Mbps)

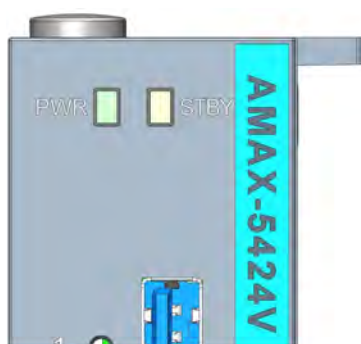
Table 5.3: AMAX-5424V Protection:

ESD Protection	8KV (air), 4KV (contact)
Isolation Protection	2,500 VDC (between USB port and backplane)

Table 5.4: AMAX-5424V Environment:

Operation Temperature	-10~60°C (vertical mounted)
Storage Temperature	-40~85°C
Relative Humidity	5~95% (non-condense)

5.1.2 LED Indicator

**Figure 5.2 AMAX-5424V Module LED Indicator****Table 5.5: AMAX-5424V Module LED Indicator**

LED	Color	Indication	Behavior
PWR	Green	ON	Controller Power on
STBY	Yellow	ON	Controller Standby Connected to DC power

5.2 AMAX-5490 2-port Isolated RS-232/422/485 Communication Module

The AMAX-5490 integrates two extra serial RS-232/422/485 COM port to the AMAX-5580 controller. The integrated system is an intelligent standalone system and can connect and issue commands to control devices such as printers and PLCs in remote factory locations.



Figure 5.3 AMAX-5490 Module

5.2.1 AMAX-5490 Specification

Table 5.6: AMAX-5490 General:

Certification	CE, FCC class A
Connector	2 x DB9
Enclosure	Aluminum housing
Power Consumption	2W@24VDC
Bus Interface	PCIe x1
LED Indicator	PWR, Standby, TX/RX

Table 5.7: AMAX-5490 Serial Communication:

Data Bits	5, 6, 7, 8
Stop Bits	1, 1.5, 2
Parity	None, even, odd
Baud Rate	50 bps ~ 230.4 kbps
Data Signals	RS-232: TXD, RXD, GND RS-422: TX+, TX-, RX+, RX- RS-485: Data+, Data-
FIFO	256 bytes
Flow Control	Xon/Xoff

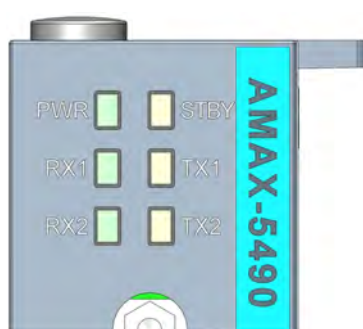
Table 5.8: AMAX-5490 Protection:

ESD Protection	8KV (air), 4KV (contact)
EFT Protection	2,000 VDC (Power Line)
Isolation Protection	2,500 VDC (between COM port and backplane)

Table 5.9: AMAX-5490 Environment:

Operation Temperature	-10~60°C (vertical mounted)
Storage Temperature	-40~85°C
Relative Humidity	5~95% (non-condense)

5.2.2 LED Indicator

**Figure 5.4 AMAX-5490 Module LED Indicator****Table 5.10: AMAX-5490 Module LED Indicator**

LED	Color	Indication	Behavior
PWR	Green	ON	Controller Power on
STBY	Yellow	ON	Controller Standby Connected to DC power
TX1	Yellow	Blink	Data is Transmitting
RX1	Green	Blink	Data is Receiving
TX2	Yellow	Blink	Data is Transmitting
RX2	Green	Blink	Data is Receiving

5.2.3 COM1/COM2 Pin-out (PB9 Male)

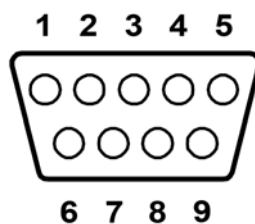
**Figure 5.5 AMAX-5490 COM1/COM2 Pin-out**

Table 5.11: DB9 Pin-out (Male)

Pin	RS232	RS422	RS485
1	NC	TX-	D-
2	RX	TX+	D+
3	TX	RX+	NC
4	NC	RX-	NC
5	GND	GND	GND
6	NC	NC	NC
7	NC	NC	NC
8	NC	NC	NC
9	NC	NC	NC

5.2.4 Jumper Switch

The two COM ports of AMAX-5490 can be configured to RS232/422/485 modes by setting the jumpers and switches as below:

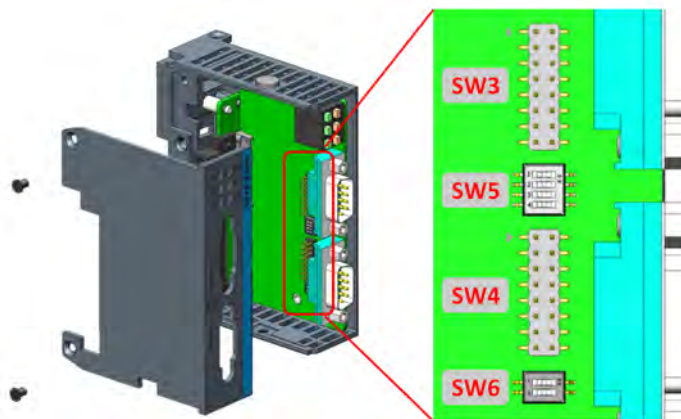


Figure 5.6 AMAX-5490 Jumper Switch

Jumper Switch Settings

SW3 (for COM1) and SW4 (for COM2) are designed for RS232/485/422 interface selection.

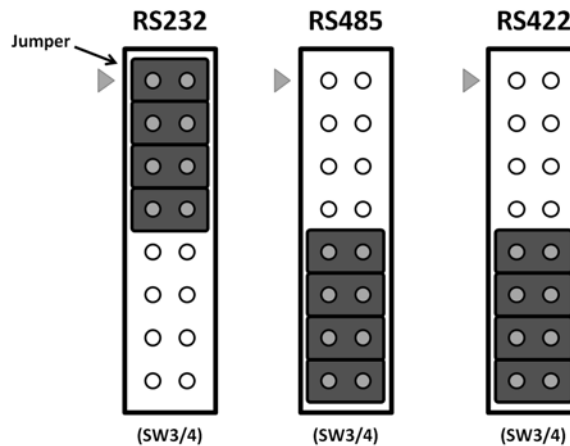


Figure 5.7 AMAX-5490 SW3/SW4

SW5 is designed for the terminal resistance settings.

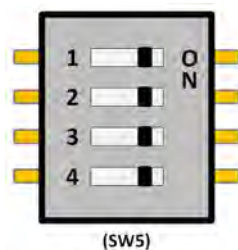


Figure 5.8 AMAX-5490 SW5

Table 5.12: AMAX-5490 SW5

COM1		
Pin1+Pin2	ON	RS485/422 terminal resistance 120Ω
	OFF	RS485/422 no terminal resistance
COM2		
Pin3+Pin4	ON	RS485/422 terminal resistance 120Ω
	OFF	RS485/422 no terminal resistance

SW6 is designed for the RS422 master/slave, or RS485 interface selection.

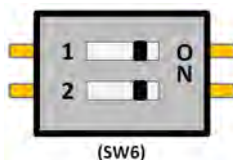


Figure 5.9 AMAX-5490 SW6

Table 5.13: AMAX-5490 SW6

COM1		
Pin1	ON	RS422 Master
	OFF	RS422 Slave / RS485
COM2		
Pin2	ON	RS422 Master
	OFF	RS422 Slave / RS485

5.3 AMAX-5493M 1-port PROFIBUS DP Master Module

The AMAX-5493M has 1-port which is compatible with PROFIBUS DP.



Figure 5.10 AMAX-5493M Module

5.3.1 AMAX-5493M Specification

Table 5.14: AMAX-5493M General:

Certification	CE, FCC class A
Connector	1 DB9
Module Enclosure	Aluminium housing
Power Consumption	4W @ 24VDC
Bus Interface	PCIe x1
LED Indicator	PWR, STBY, ERR, STA

Table 5.15: AMAX-5493M Serial Communication:

Protocol	PROFIBUS-DP V1
DB9	3 – RxD/TxD-P, 5 – DGND, 5 – DGND, 6 – VP, 8 – RxD/TxD-N, 1, 2, 4, 7, 9 - NC
Speed	9.6kbps ~ 12Mbps
Displays	SYS, System status LED

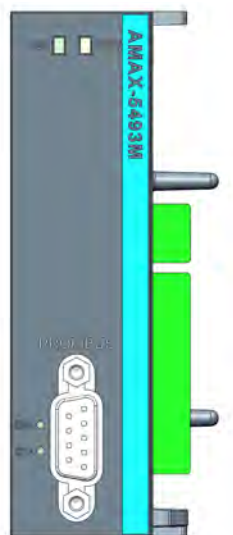
Table 5.16: AMAX-5493M Protection:

ESD Protection	8KV (air), 4KV (contact)
Isolation Voltage	2,000VDC

Table 5.17: AMAX-5493M Environment:

Operation Temperature	-10 ~ 60°C (Vertical mounted)
Storage Temperature	-40 ~ 85°C
Relative Humidity	5 ~ 95% (non-condensing)

5.3.2 LED Indicator

**Figure 5.11 AMAX-5493M Module LED Indicator****Table 5.18: AMAX-5493M Module LED Indicator**

LED	Colour	Behaviour	Indication
PWR	Green	ON	Controller Power On
STBY	Yellow	ON	Controller Standby and Connected to DC power
ERR	RED	ON	Wrong Configuration at PROFIBUS-DP Side
STA	Green	ON	RUN, Cyclic communication

5.3.3 Pin Assignments (DB9 Male)

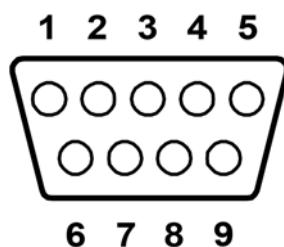
**Figure 5.12 AMAX-5493M COM1 Pin-out**

Table 5.19: DB9 Pin-out (Male)

Pin	Signal
1	NC
2	NC
3	RxD/TxD-P
4	NC
5	DGND
6	VP
7	NC
8	RxD/TxD-N
9	NC

For more information, please refer to cifX 90E

5.4 AMAX-5495 2-port CAN Module

The AMAX-5495 features 2 extension ports for CAN interface, which supports CAN 2.0B Protocol and compatible with CAN 2.0A Protocol.



Figure 5.13 AMAX-5495 Module

5.4.1 AMAX-5495 Specification

Table 5.20: AMAX-5495 General:

Certification	CE, FCC class A
Connector	2 x DB9
Enclosure	Aluminum housing
Power Consumption	3W@24VDC
Bus Interface	PCIe x1
LED Indicator	PWR, Standby, TX/RX

Table 5.21: AMAX-5495 Serial Communication:

Protocol	CAN2.0 A/B
Data Transfer Rate	1Mbits/s
DB9	2 - CAN_N 7 - CAN_P 3 - CAN_ISO 1, 4, 5, 6, 8, 9 - NC

Table 5.22: AMAX-5495 Protection:

ESD Protection	8KV (air), 4KV (contact)
EFT Protection	2,000 VDC (Power Line)
Isolation Protection	2,500 VDC (between COM port and backplane)

Table 5.23: AMAX-5495 Environment:

Operation Temperature	-10~60°C (vertical mounted)
Storage Temperature	-40~85°C
Relative Humidity	5~95% (non-condense)

5.4.2 LED Indicator

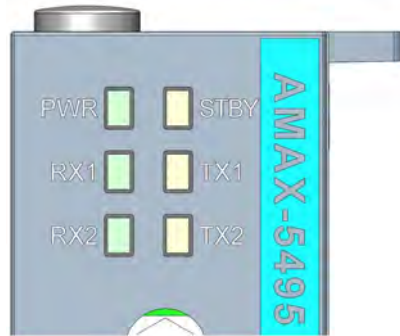


Figure 5.14 AMAX-5495 Module LED Indicator

Table 5.24: AMAX-5495 Module LED Indicator

LED	Color	Indication	Behavior
PWR	Green	ON	Controller Power on
STBY	Yellow	ON	Controller Standby Connected to DC power
TX1	Yellow	Blink	Transmitting Data
RX1	Green	Blink	Receiving Data
TX2	Yellow	Blink	Transmitting Data
RX2	Green	Blink	Receiving Data

5.4.3 Pin Assignments (DB9 Male)

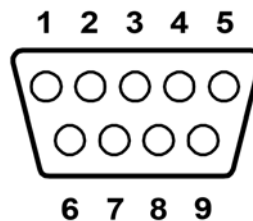


Figure 5.15 AMAX-5495 COM1/COM2 Pin-out

Table 5.25: DB9 Pin-out (Male)

Pin	Signal
1	NC
2	CAN_N
3	CAN_ISO

Table 5.25: DB9 Pin-out (Male)	
4	NC
5	NC
6	NC
7	CAN_P
8	NC
9	NC

5.4.4 Jumper Switch

SW1 was designed for the terminal resistance of CAN 1 and CAN 2.



Figure 5.16 AMAX-5495 SW1

Table 5.26: AMAX-5495 SW1		
CAN 1		
Pin 1	ON (Default)	120Ω
	OFF	Without resistance
CAN 2		
Pin 2	ON (Default)	120Ω
	OFF	Without resistance

5.4.5 Advantech Device Manager / Driver Installation

Advantech provides WDM CAN driver that allows you to configure your hardware and store the settings in your Windows registry. You must install the WDM CAN driver if you want to add and manage Advantech CAN cards. Please follow the steps below to install Advantech CAN WDM Driver.

1. Select "Next" to continue the installation.

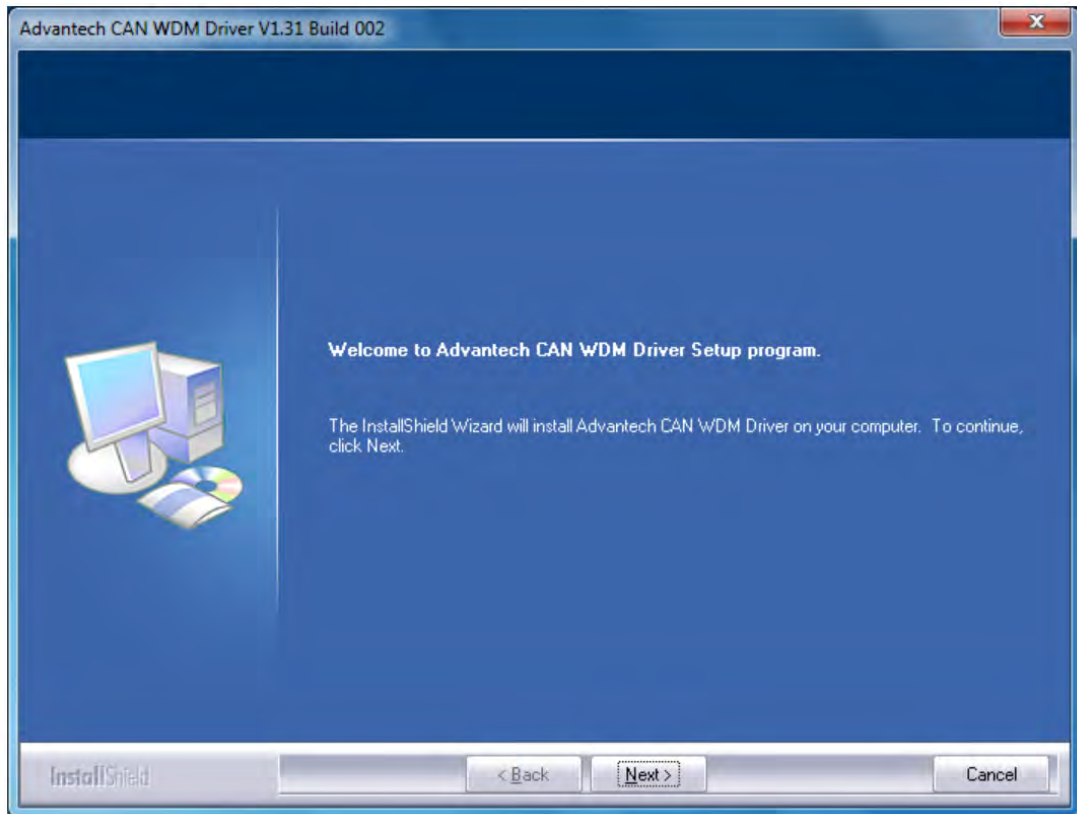


Figure 5.17 Driver Installation Step1

2. After a while, the installation will be complete.

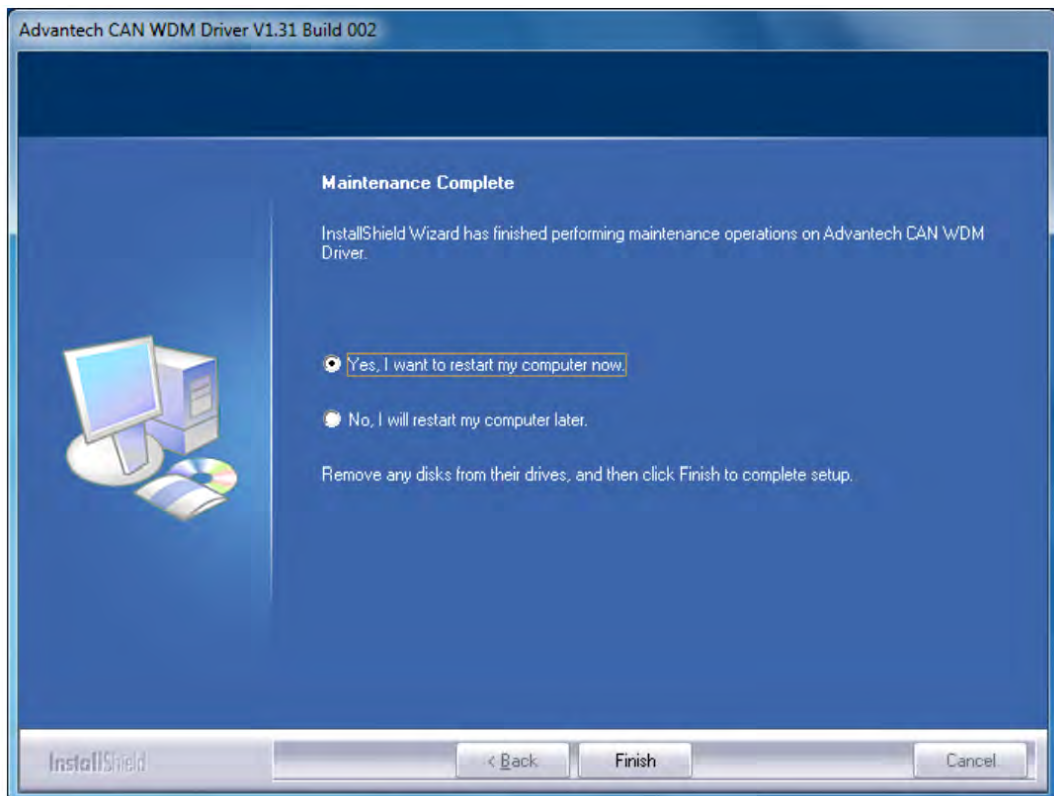


Figure 5.18 Driver Installation Step2

3. After the physical hardware has been installed, the card will be automatically detected.

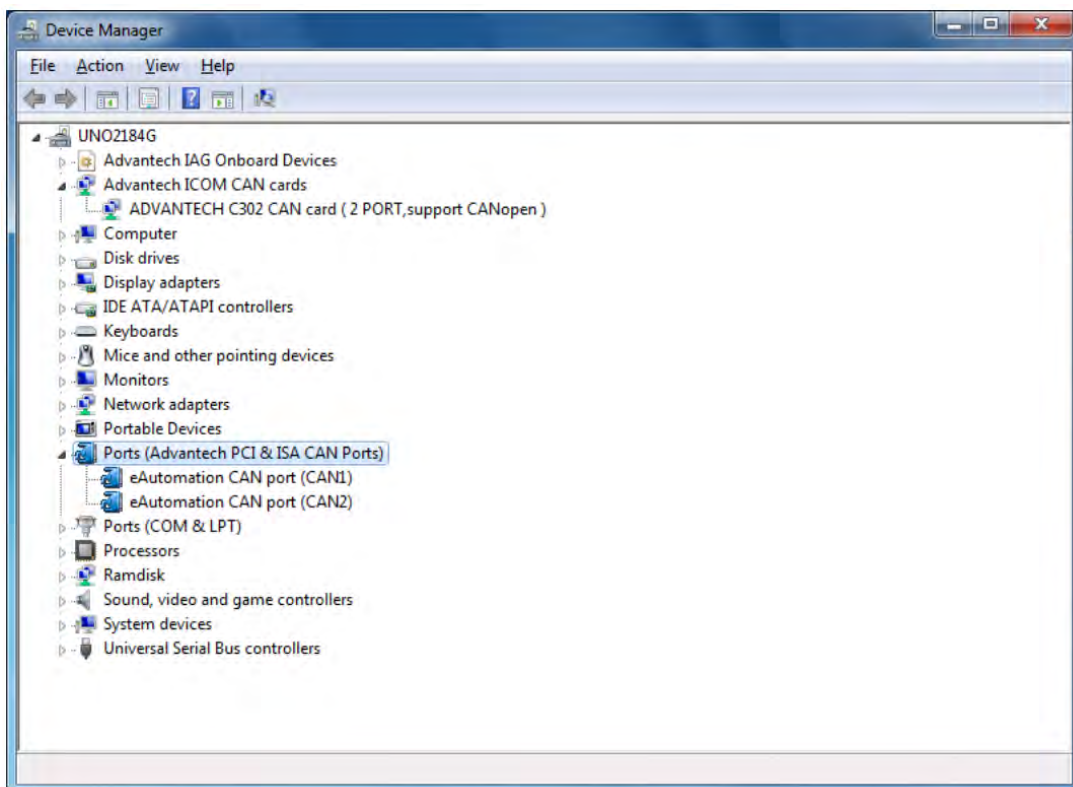


Figure 5.19 Driver Installation Step3

5.5 AMAX-5410 2-port GigE Vision Frame Grabber Module

The AMAX-5410 provides two extra GigE interface to the AMAX-5580 controller.



Figure 5.20 AMAX-5410 Module

5.5.1 AMAX-5410 Specification

Table 5.27: AMAX-5410 General:

Certification	CE, FCC class A
Connector	2 x RJ45
Enclosure	Aluminum housing
Power Consumption	2.5W@24VDC
Bus Interface	PCIe x1
LED Indicator	PWR, Standby

Table 5.28: AMAX-5410 Ethernet:

Compatibility	IEEE802.3, IEEE802.3u, IEEE802.3ab, IEEE802.3x, IEEE802.3af
Speed	10/100/1000 Mbps
No. of Ports	2 Gigabit Ethernet Media Access Control (MAC) and physical layer (PHY) ports.
Input Voltage	24 VDC direct from AMAX-5000 CPU module

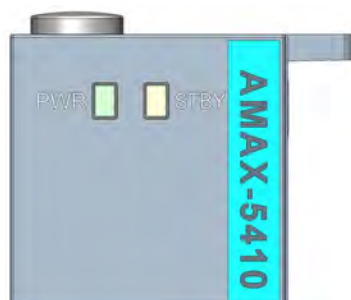
Table 5.29: AMAX-5410 Protection:

ESD Protection	8KV (air), 4KV (contact)
EFT Protection	2,000 VDC
Isolation Protection	2,500 VDC

Table 5.30: AMAX-5410 Environment:

Operation Temperature	-10~60°C (vertical mounted)
Storage Temperature	-40~85°C
Relative Humidity	5~95% (non-condense)

5.5.2 LED Indicator

**Figure 5.21 AMAX-5410 Module LED Indicator****Table 5.31: AMAX-5410 Module LED Indicator**

LED	Color	Indication	Behavior
PWR	Green	ON	Controller Power on
STBY	Yellow	ON	Controller Standby Connected to DC power

5.6 AMAX-5410P 2-port PoE Vision Frame Grabber Module

The AMAX-5410P provides two extra ports of GigE interface with PoE interface to the AMAX-5580 controller. The maximum power is 15W per port; and maximum 20W for entire module DC output to the external PoE devices. The power comes from the internal PCIe bus, so no external power is needed.



Figure 5.22 AMAX-5410P Module

5.6.1 AMAX-5410P Specification

Table 5.32: AMAX-5410P General:

Certification	CE, FCC class A
Connector	2 x RJ45
Enclosure	Aluminum housing
Power Consumption	2.5W@24VDC
Bus Interface	PCIe x1
LED Indicator	PWR, Standby

Table 5.33: AMAX-5410P Ethernet:

Compatibility	IEEE802.3, IEEE802.3u, IEEE802.3ab, IEEE802.3x, IEEE802.3af
Speed	10/100/1000 Mbps
No. of Ports	2 Gigabit Ethernet Media Access Control (MAC) and physical layer (PHY) ports.
Input Voltage	24 VDC direct from AMAX-5000 CPU module
Output PoE Power	48 VDC PoE Power output, 15W per port, total Max.20W (AMAX-5410P only)

Table 5.34: AMAX-5410P Protection:

ESD Protection	8KV (air), 4KV (contact)
----------------	--------------------------

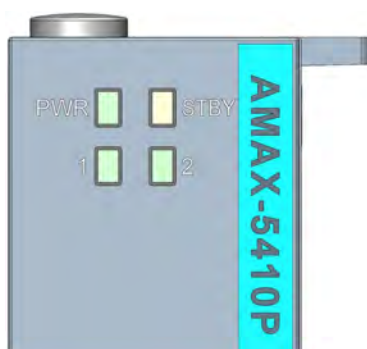
Table 5.34: AMAX-5410P Protection:

EFT Protection	2,000 VDC
Isolation Protection	2,500 VDC

Table 5.35: AMAX-5410P Environment:

Operation Temperature	-10~60°C (vertical mounted)
Storage Temperature	-40~85°C
Relative Humidity	5~95% (non-condense)

5.6.2 LED Indicator

**Figure 5.23 AMAX-5410P Module LED Indicator****Table 5.36: AMAX-5410P Module LED Indicator**

LED	Color	Indication	Behavior
PWR	Green	ON	Controller Power on
STBY	Yellow	ON	Controller Standby Connected to DC power
1	Green	ON	Port1 is connected
2	Green	ON	Port2 is connected

5.7 AMAX-5400E PCIe Mini Card Expansion Module

The AMAX-5400E module provides additional PCIe mini card and SIM card slot to the AMAX-5580 controller. It can be also installed an antenna on the top of the module to enhance the wireless signal.



Figure 5.24 AMAX-5400E Module

5.7.1 AMAX-5400E Specifications

Table 5.37: AMAX-5400E General

Certification	CE, FCC class A
Enclosure	Aluminum housing
Power Consumption	0.5W@24VDC
Bus Interface	PCIe x1
LED Indicator	PWR, Standby

Table 5.38: AMAX-5400E Expansion Functions

Interface	Full size mini PCI express 2.0 (PCIe or USB signal)
SIM card slot	Mini SIM card
Antenna	1 x SMA hole on the top

Table 5.39: AMAX-5400E Environment

Operation Temperature	-10 ~ 60 °C (vertical mounted)
Storage Temperature	-40 ~ 85 °C
Relative Humidity	5 ~ 95% (non-condense)

5.7.2 LED Indicator

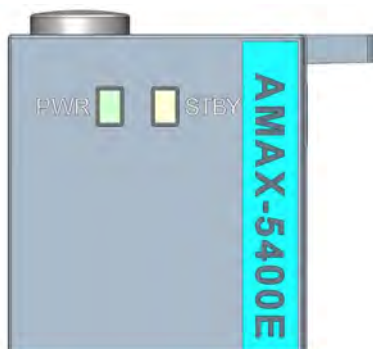


Figure 5.25 AMAX-5400E Module LED Indicator

Table 5.40: AMAX-5400E Module LED Indicator

LED	Color	Indication	Behavior
PWR	Green	ON	Controller Power on
STBY	Yellow	ON	Controller Standby Connected to DC power

5.7.3 PCIe Mini Card Installation Guide

In order to install PCIe mini card and Antenna (if needed), please remove side cover, the PCIe mini card slot and mounting hole's position is shown as below figure.

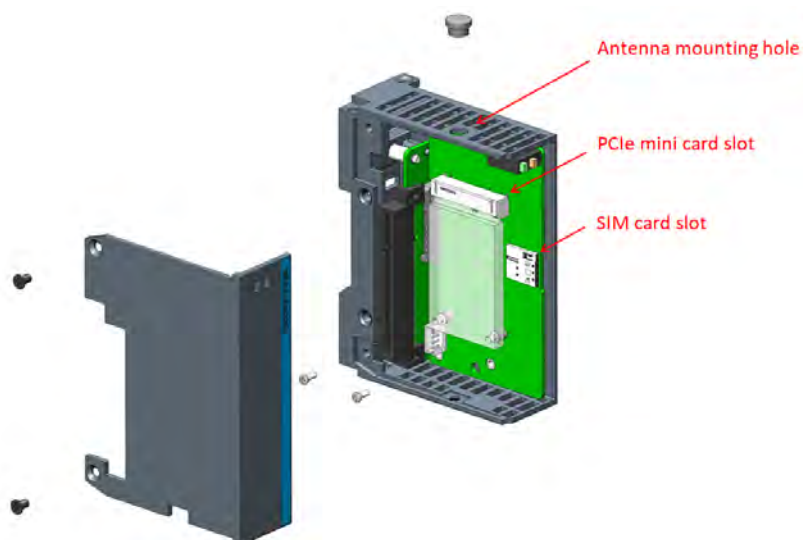


Figure 5.26 AMAX-5400E PCIe mini card installation guide

Appendix **A**

Pin Assignments

A.1 AMAX-5580 COM1/COM2 RS-232/422/485

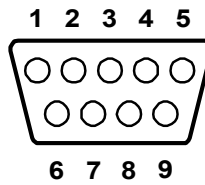


Table A.1: RS-232 Serial Port Pin Assignments

Pin	Pin Name
1	DCD
2	RxD
3	TxD
4	DTR
5	GND
6	DSR
7	RTS
8	CTS
9	RI

Table A.2: RS-422/485 Serial Port Pin Assignments

Pin	RS-422	RS-485
1	TX-	Data-
2	TX+	Data+
3	RX+	NC
4	RX-	NC
5	GND	GND
6	NC	NC
7	NC	NC
8	NC	NC
9	NC	NC

Note! Please setup RS-232/422/485 serial configuration in BIOS (Default RS-232 mode)



A.2 AMAX-5580 USB Connector

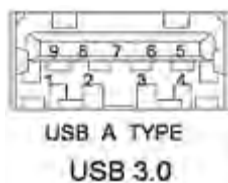


Table A.3: USB 3.0 Connector Pin Assignments

Pin	Signal Name	Description
1	VBUS	Power
2	D-	USB2.0 differential pair
3	D+	
4	GND	Ground for power return
5	StdA_SSRX-	SuperSpeed receiver differential pair
6	StdA_SSRX+	
7	GND_DRIAN	Ground for signal return
8	StdA_SSTX-	SuperSpeed transmitter differential pair
9	StdA_SSTX+	

A.3 AMAX-5580 HDMI Display Connector

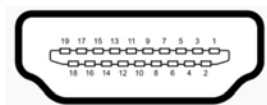


Table A.4: HDMI Display Connector

Pin	Signal	Pin	Signal
1	TMDS Data2+	2	TMDS Data2 Shield
3	TMDS Data2-	4	TMDS Data1+
5	TMDS Data1 Shield	6	TMDS Data1-
7	TMDS Data0+	8	TMDS Data0 Shield
9	TMDS Data0-	10	TMDS Clock+
11	TMDS Clock Shield	12	TMDS Clock-
13	CEC	14	Reserved
15	SCL	16	SDA
17	DDC/CEC/HEC Ground	18	+5 V Power (max 50 mA)
19	Hot Plug Detect		

A.4 AMAX-5580 EtherCAT Connector (Between IO Modules)

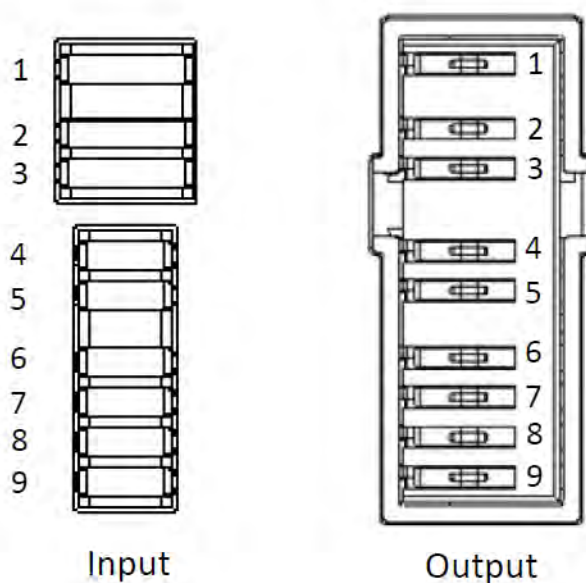


Table A.5: EtherCAT Connector

Pin	Signal Name (Input)	Signal Name (Input)
1	FG	FG
2	GND	GND
3	GND	GND
4	24V	24V
5	24V	24V
6	TX+	RX+
7	TX-	RX-
8	RX+	TX+
9	RX-	TX-

A.5 AMAX-5580 LED Indicators

Table A.6: PWR LED

Description		ACPI Status
LED Status	OFF	Shutdown
	Green	S0
	Flashing Green	S3
	Orange	S5

Table A.7: SATA LED

Description		SATA Read and Write
LED Status	OFF	Not working
	Orange	Read and Write

Table A.8: RUN LED

Description		User Defined
LED Status	OFF	User Defined
	Green	User Defined

Table A.9: ERR LED

Description		User Defined
LED Status	OFF	User Defined
	Red	User Defined

Table A.10: Over Temp LED

Description		User Defined
Setting		BIOS
LED Status	OFF	Normal
	Red	Over temp
	Green	OS Recovery

Table A.11: ERR VOL

Description		Detect AC1 and AC2 power high and low limit voltage
Setting		BIOS
LED Status	OFF	Safety
	Red	Abnormal*
	Green	OS Recovery

*Due to the resolution of the chipset, the real lower limitation will be around 19.3V (2LSB)

Table A.12: BATT LOW

Description		Detect battery voltage
Setting		BIOS
LED Status	OFF	Normal
	Red	Battery Low

www.advantech.com

Please verify specifications before quoting. This guide is intended for reference purposes only.

All product specifications are subject to change without notice.

No part of this publication may be reproduced in any form or by any means, electronic, photocopying, recording or otherwise, without prior written permission of the publisher.

All brand and product names are trademarks or registered trademarks of their respective companies.

© Advantech Co., Ltd. 2023